
This document has been checked for information on Native American burials. No images considered to be culturally insensitive, including images and drawings of burials, Ancestors, funerary objects, and other NAGPRA material were found.



**UNIVERSITY OF
GEORGIA**

**Franklin College of
Arts and Sciences**

Department of Anthropology

Laboratory of Archaeology

UNIVERSITY OF GEORGIA
LABORATORY OF ARCHAEOLOGY SERIES
REPORT NUMBER 107

**THE AVERY MOUND SITE, 9TP64
A BRIEF INTRODUCTION**

MARK WILLIAMS

The Avery Mound Site, 9TP64
A Brief Introduction

Mark Williams
University of Georgia

Table of Contents

Table of Contents	ii
List of Figures	iii
List of Tables	iv
Introduction	1
Grid System and Contour Mapping	7
1966 Season	12
1967 Season	14
Late 1967 / Early 1968 Season	17
1968 Season	19
1969 Season	21
1972 “Season”	23
1973 Season	25
All Seasons	27
Features	29
Post Molds	35
Artifacts	37
Summary	38
References Cited	39
Appendix 1. Huscher’s 1971 Summary of Work at the Avery Site	40
Appendix 2. Gail Schnell’s 1970 Paper on Ceramics from Avery Site	45
Appendix 3. Simplified Artifact Catalog	53

List of Figures

Figure 1. Chattahoochee River and Valley, Looking South	6
Figure 2. Excavations as of Early 1968, Looking Southwest	7
Figure 3. Elevation Point Locations Alone	9
Figure 4. Elevation Points and Contours (.3 feet interval)	10
Figure 5. Contour Map (.3 feet intervals)	11
Figure 6. 1966 Excavations Locations (in Green)	13
Figure 7. 1967 Excavations Locations Map	15
Figure 8. Yellow Clay Mound Layer (in Blue)	16
Figure 9. Late 1967 / Early 1968 Excavations Locations Map	18
Figure 10. 1968 Excavations Locations Map	20
Figure 11. 1969 Excavations Locations Map	22
Figure 12. 1972 Excavations Locations Map	24
Figure 13. 1973 Excavations Locations Map	26
Figure 14. All Excavations Locations Map	28
Figure 15. All Post Molds Recorded	36

List of Tables

Table 1. Estimated Field Excavation Dates.....	4
Table 2. Maps and Plans in Collection.....	5
Table 3. Features Defined at the Avery Site.....	29-34

Introduction

This limited site report aims to inform archaeologists of Georgia and people interested in Georgia and Southeastern prehistory of more of the details of an important Mississippian mound site that is almost unknown to the field. My reference here is the Avery (or Potts) mound site (9TP64), located in Troup County, Georgia. The site was drowned under the waters of the West Point Reservoir about 1975 and is presumed to be now destroyed. The site and village, located on the eastern bank of the Chattahoochee River, was excavated from 1966-1969 and again in 1972-1973, just before it was covered by the lake in 1975. The site was apparently known locally for many years before the excavations, but was added to the official inventory of archaeological sites in Georgia by the late Harold Huscher (1908-1992), probably no earlier than 1966. Huscher never wrote an actual site report of this site, and the only written information available is a 1971 limited summary written by him for the excavation funding agency, the U.S. National Park Service. The dam itself and accompanying reservoir itself was a project of the U.S. Army Corps of Engineers that took 10 years to complete. In the years before the creation of modern Cultural Resource Management in early 1974, funding for what was then called salvage archaeology was minimal.

Harold A. Huscher was originally from rural southwestern Colorado, and conducted early archaeological research in that region in the mid to late 1930s. He was a medic in the American European campaign during World War II, and then entered graduate school at Columbia University in New York after the war. Huscher spent much time conducting excavations for the Smithsonian Institution in the Missouri River basin during this same period, and intended to write a dissertation on some of this work. He never completed this, however. In the late 1950s he was assigned by the Smithsonian Institute to the lower Chattahoochee River area to work on

the survey and testing of archaeological sites there in the Walter F. George and Columbia Reservoirs. He was the logical person for the Smithsonian to send back to work in the then new project—the West Point Reservoir. During his time in Georgia, he became associated with the Department of Anthropology of the University of Georgia in Athens through his friendship with Arthur Kelly, then the acknowledged as the grand old man of Georgia archaeology. Huscher eventually moved to Athens and taught introductory anthropology courses there for several years, while trying to work on the Chattahoochee Valley collections he had excavated. All of the artifacts and notes from the West Point Reservoir work was thus curated in the UGA Laboratory of Archaeology in the 1960s and remain there to the present. Huscher eventually retired to Standing Rock, Alabama, near the West Point Reservoir, where he died and is buried at the Methodist Church along with his close friends Marjorie and Bob Gay. Ironically, this is only 8 miles from the Avery site.

In the fall of 1968 I was a junior undergraduate anthropology major at the University of Georgia, recently hired by Joe Caldwell, Director of the UGA Laboratory of Archaeology, and assigned to work with Harold Huscher. I worked in Huscher's lab at the Lucy Cobb archaeology facility (closed about 1975) on much of the data gathered by Huscher from the West Point Reservoir. One of the sites I was intrigued by was 9TP64. There were a great many field drawing maps, including hundreds of post molds and feature drawings, and a very large collection of artifacts. During the summer of 1969 I ran Huscher's lab in Athens while he went back to conduct more excavations on site at West Point. I visited him there, bringing equipment from Athens, and was permitted to visit several excavations in progress—including the minimal work conducted at Avery that year. The site, located on the old Potts Plantation, had been called the Potts site until David Hally published his 1970 site report on the Potts Tract site in Murray

County (Hally 1970), at which point the name Potts was changed to Avery for 9TP64. The Avery family apparently owned the site at the time it was excavated. Huscher did retain the name Potts for the destroyed southern mound at the site.

As noted above, Huscher was contractually required to submit a report on the West Point project to the National Park Service. He wrote a very limited amount of information on the Avery dig, and it is reproduced here as Appendix 1. This does not include any information on the 1973 excavations at the site. I saw his report soon after it was completed. Huscher included my first professional paper on the trade goods from 9TP9 as an appendix to that report (even though he added his name before mine!). Among other things, I was disappointed that the Avery site received such brief and limited reporting.

As the years moved on, Huscher never was able to write a report on the site, and I moved on to conducting my own research into sites in the Oconee River valley in eastern Georgia. In 2009 I was able to return to my early fascination with the sites of the West Point Reservoir and presented an analysis of the post molds and features from the Burnt Village site, 9TP9 (Williams 2009). Now, in retirement, I can finally turn to the data from the Avery site. I should begin by listing the resources available and those missing for the Avery site curated at the UGA Laboratory of Archaeology.

In terms of actual written field notes, the only daily notes available are those of archaeologist Pat Garrow from the 1967 season. The first excavations at the site had been made in 1966 under Huscher's direct supervision, and consisted of a 5-foot wide trench that entered the northern mound at the site from its western side. There are no extant field notes for this initial work. Garrow's 1967 notes are excellent. The amount of excavation in 1967 was significantly greater than that of 1966, and involved expanded excavations on the mound, significant testing to

the north of the mound, and some testing in the south where a southern mound had reportedly been bulldozed some years before. The 1968 season was also one of major excavations at the site, and I assume Huscher was directly in charge. Huscher was variously aided at times by sisters Gloria and Marcie Wentowski and Charlie Moore, all of who he trusted with aspects of his field operations. It is possible that one or more of these people ran the daily operations, but we have no extant field notes for 1968 (or 1969 and 1973). What we do have, and what is ultimately more important, is a large batch of field-drawn maps of the excavations. The first lab job Huscher gave me in 1968 was to ink these maps, which had been field recorded in pencil. Fortunately, most of the maps have dates and grid references included that have permitted me to create the maps presented herein. Indeed, using the map dates, and a few other dates from the crude artifact catalog from the site, the following dates for the six seasons of excavations have been deduced. The total estimated number of weeks at the site is 52—an entire year (Table 1.)! The crew size seems to have typically been about 6-8 workers. I know that some years University of Georgia students were involved. Often local young people were hired as part of federal sponsored youth programs. Terry Jackson reported (personal communication) that many of the workers in the 1973 work were art students from nearby LaGrange College.

Dates	Total
1966 June 8, June 14, June 22, July 1- July 25, August 28	ca. 8 weeks
1967 May 14, Monday June 19--September 1	ca. 10 weeks
1968 July 17—September 16	ca. 8 weeks
1969 June 1 – July 15	ca. 6 weeks
1972 December 12	1 day?
1973 January 19--June 9	ca. 20 weeks

Table 1. Estimated Field Excavation Dates.

The approximate number of maps and plans in the current collection is presented in the following Table 2.

Year	Features with or without Posts	Posts Only	Profiles	Totals
1966	3	5	2	10
1967	34	2	3	39
1968	61	47	7	115
1969	11	12	5	28
1972	0	5	0	5
1973	85	35	40	160
Totals	194	106	57	357

Table 2. Maps and Plans in Collection.

Thus, there are 357 field drawn maps available to understand the nature of the excavations and the site itself. In fact, there were a few more maps that were generated when a simple contour mapping project was implemented, presumably in 1967. This is made clear from the simple contour map of the northern mound area included in Huscher's 1971 summary mentioned before (Appendix 1). More on this will be presented momentarily.

Grid System and Contour Mapping

The initial grid system implemented on the site implement in 1966 was based upon a stake place in the top center of the northern mound labeled as 0 South, 0 West. All readings in all seasons were in feet rather than meters, as was the norm at that time. It appears that the only excavation trench in 1966 was a 5-foot wide one extending to west from this area, presumably to obtain a profile of the low heavily plowed mound. In 1967 (and for all subsequent seasons), the stake in the center of the top of the mound was labeled 500 South, 500 East, with the new zero point arbitrarily well off the site to the northwest.

I should point out here that modern GIS software requires all mapping data to be entered as North and East coordinates, thus for this project, all the South map coordinates for all the

hundreds of maps digitized here had to have their South coordinate converted to a North one. I assumed for this project that the stake in the center of the mound (500 South) became 500 North, and all conversions derive from that point. Thus 600 South became 400 North, 800 South became 200 North, etc. The East coordinates, of course, were not modified for mapping here. For this project the limits of mapping (and the excavations) within were the range of 400-700 East (300 feet or just over 90 meters) and 100-825 North (725 feet or just over 220 meters). The size of the distribution of pottery at the site was never recorded, but an aerial photo apparently made in 1968 shows that the Chattahoochee River was not far west of the 400 East limit—perhaps another 50 feet or so. I should point out that the entire excavated area was in pasture at the time of the research. There was narrow border of trees along the river bank at the time of excavation. Figure 1 shows the Chattahoochee River and valley looking south in 1968. The site is not in the field in the foreground, but in the field behind it in the distance. The Chattahoochee can be seen making a broad curve to the west and back to the east in the photograph.



Figure 1. Chattahoochee River and Valley, Looking South.

Figure 2 shows the site excavation early the 1968 season. The view is to the southwest, with the river itself and the trees bordering it at the top. The low raised area of the low mound is visible in the figure.



Figure 2. Excavations as of Early 1968, Looking Southwest.

Grid System and Contour Mapping

Apparently a traditional transit was used to take elevations from two points on the site—the estimated centers of the two mounds. From the northern mound center a series of eight radiating elevation lines were recorded, starting at 0 degrees (north), and then at 45 degree intervals around the circle. Typically elevations were made at 10 foot intervals along each line. The total number of elevation points made from the northern transit point was 109. A similar system was used from the southern transit point, with the exception that the elevation lines were shot at 30 degree intervals rather than 45 degrees. This resulted in 12 radiating elevation lines, with a total of 217 points.

Figure 3 shows the locations of all these points within the (south-north modified) grid. There is no indication of where the site zero elevation reference point was (Likely a nail in a tree close to the river), but the two survey reference points were aligned with one another somehow. I arbitrarily subtracted all elevation readings from 100.00 for mapping. The actual elevation of the site was about 580 feet above mean sea level.

Figure 4 shows these survey location points overlaid on a contour map of the site generated using *Surfer* 14, a software mapping program from Golden Software in Golden, Colorado. The contour interval selected was .3 feet, or about 3.6 inches. In order to create the map, I had to determine the north and east coordinates of each survey point. While this is easy for the lines on the cardinal directions, it would involve trigonometry for those on the angles. Instead I opted to use digitizing software (*Didger* from Golden Software) that made the task trivial. Figure 5 shows the final site contour map without the elevation reference points.

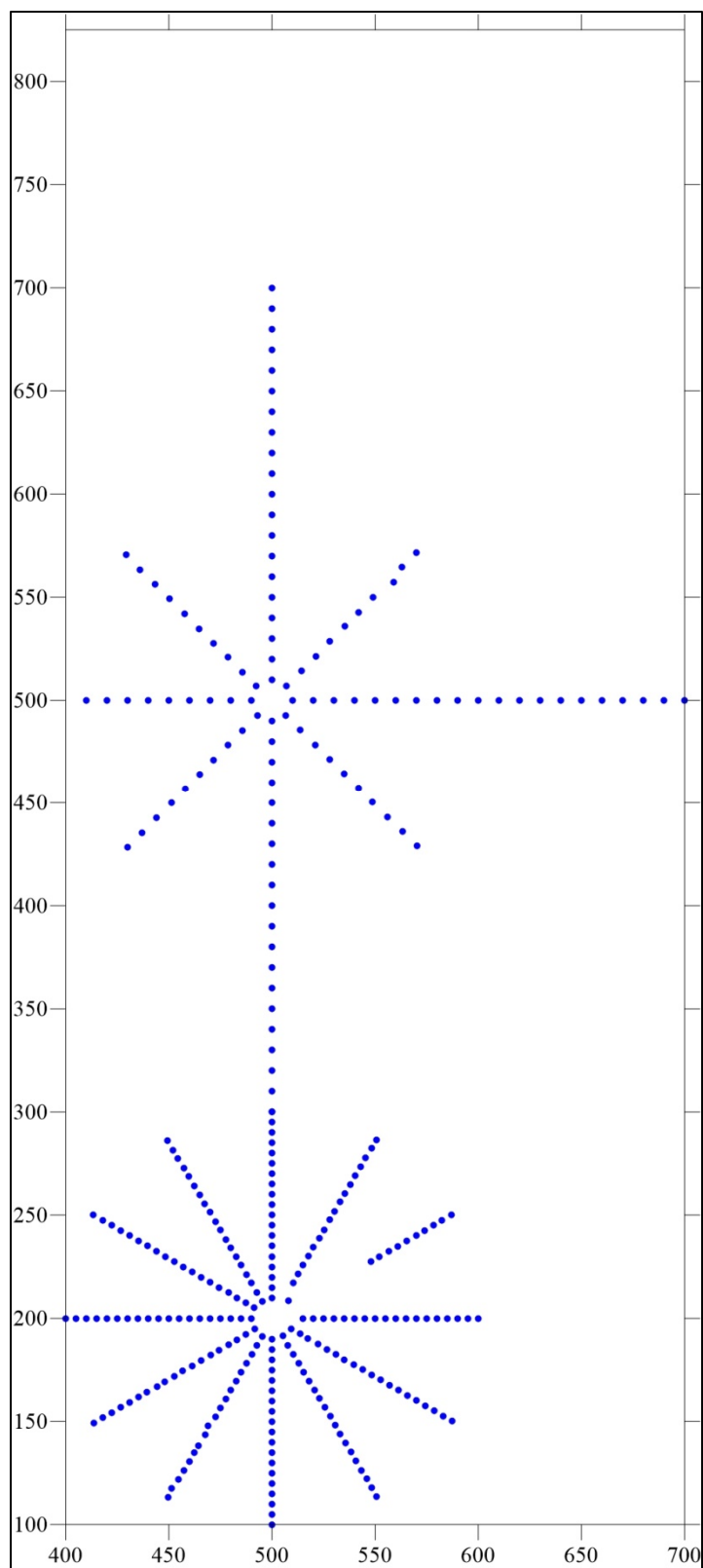


Figure 3. Elevation Point Locations Alone.

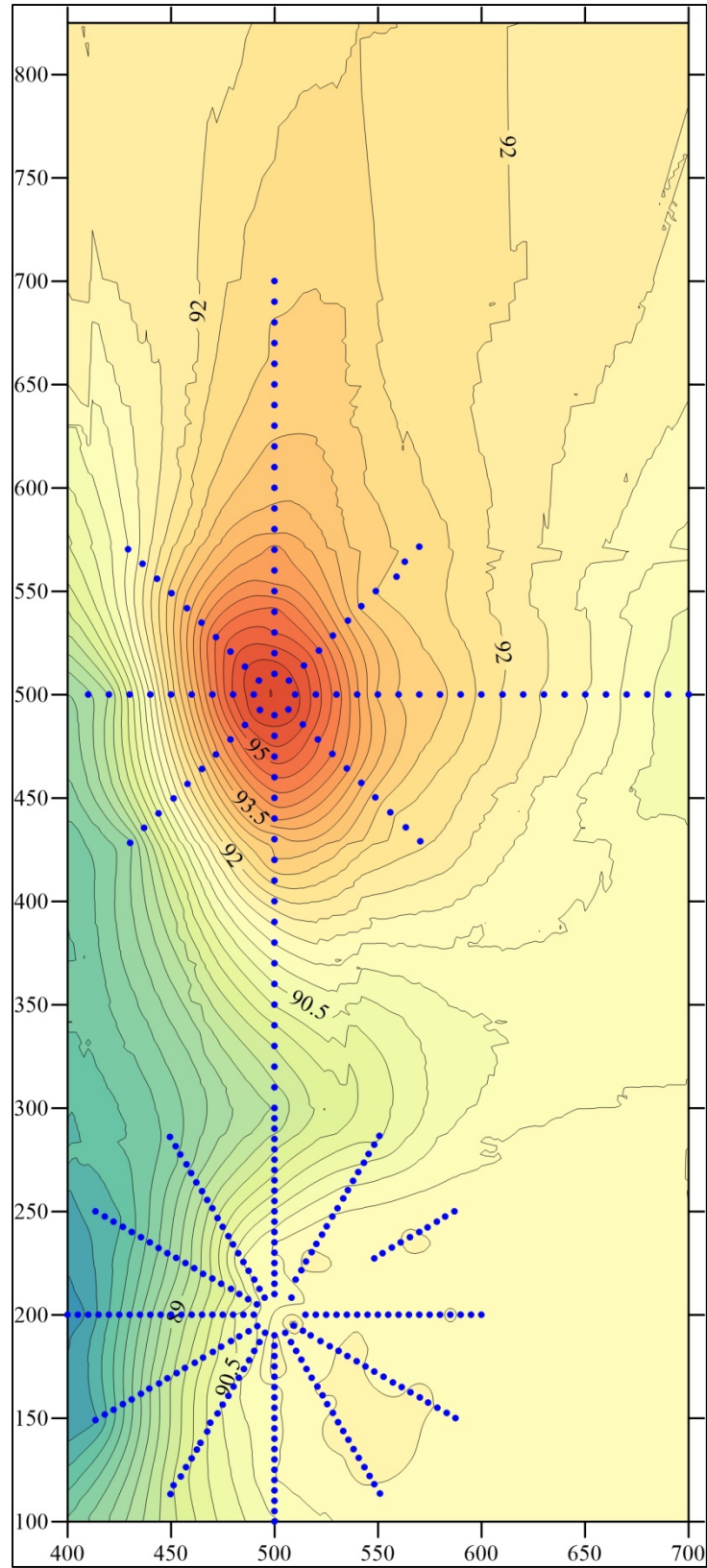


Figure 4. Elevation Points and Contours (.3 foot interval)

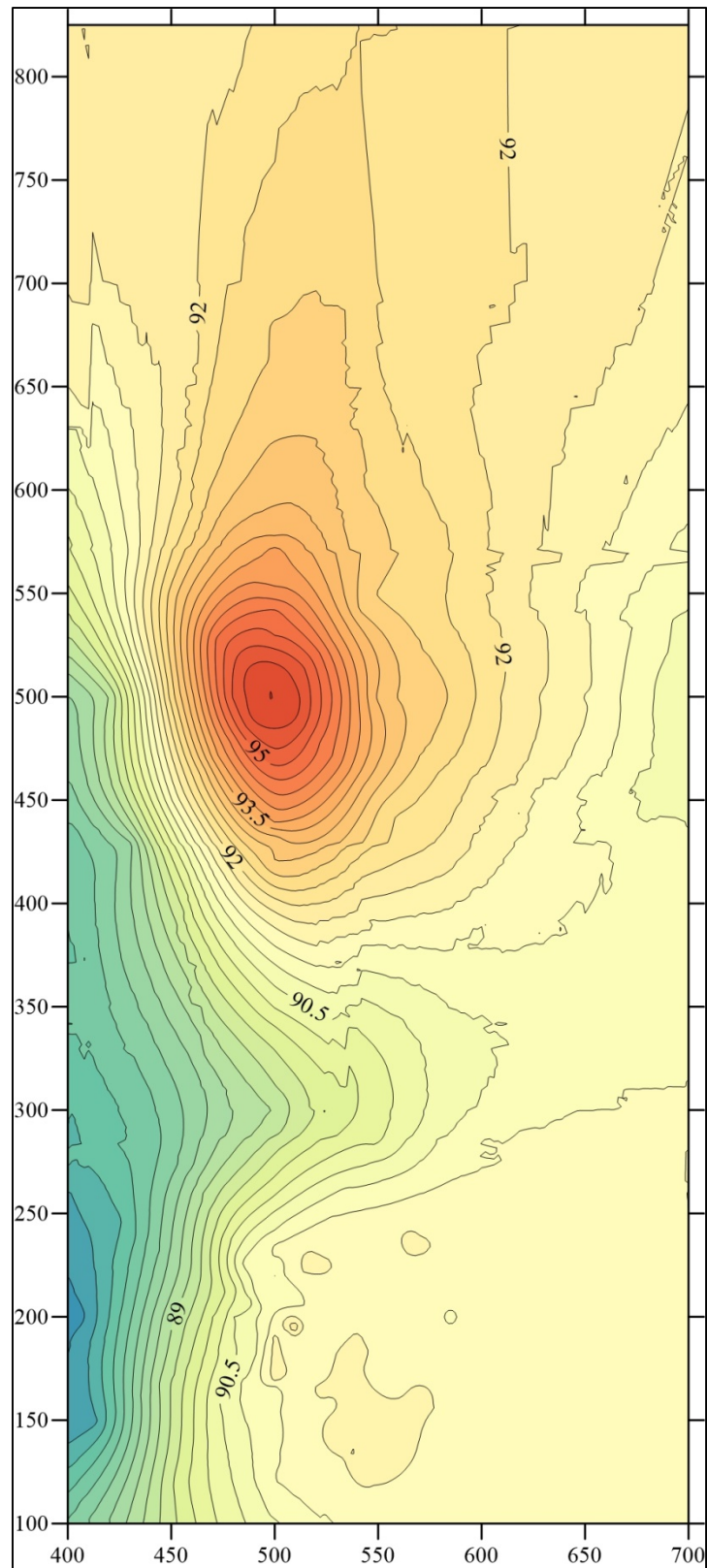


Figure 5. Contour Map (.3 feet intervals)

Clearly the areas of the map to the far north, northwest, and southeast, where there are no data points are not reliable in the contour map. On the other hand, the entire area is generally flat river bottomland anyway. The southern “mound” that had reportedly been bulldozed down can barely be detected in the contour map. It is even difficult to say where the center of that mound had been located. It is also difficult to state the height of the northern mound from this map since the shape is a simple gradual oval. The long axis seems to be very slightly west of north, but is uncertain. I would say the height of the mound as excavated was about 3 feet. It is not possible to know how high was aboriginally, but I doubt it was even 10 feet high. It had been plowed for many generations.

1966 Season

This work was conducted over an 8-week period during the summer of that year. It is likely that the work was somewhat sporadic and not continuous during that period, since Huscher was also conducting major excavation at 9TP9 at the same time. We do not know the crew size. The work consisted of a single 5-foot wide trench that was extended for some 45 feet in length (Figure 6). It began well west of the center of the mound and extended almost to the woods near the eastern bank of the Chattahoochee River, and did not extend over the mound. There are no extant notes for this season, but the apparent purpose of the trench was to make sure the rise was indeed artificial and to reveal any outlying mound stratigraphy. The trench profile was somewhat equivocal, but Huscher apparently believed there were two mound stages revealed in the profiles. Certainly there were no more stages than that. The trench was apparently backfilled at the end of the 1966 season. Four feature numbers were apparently assigned in the trench, but only one was described (Feature 1).

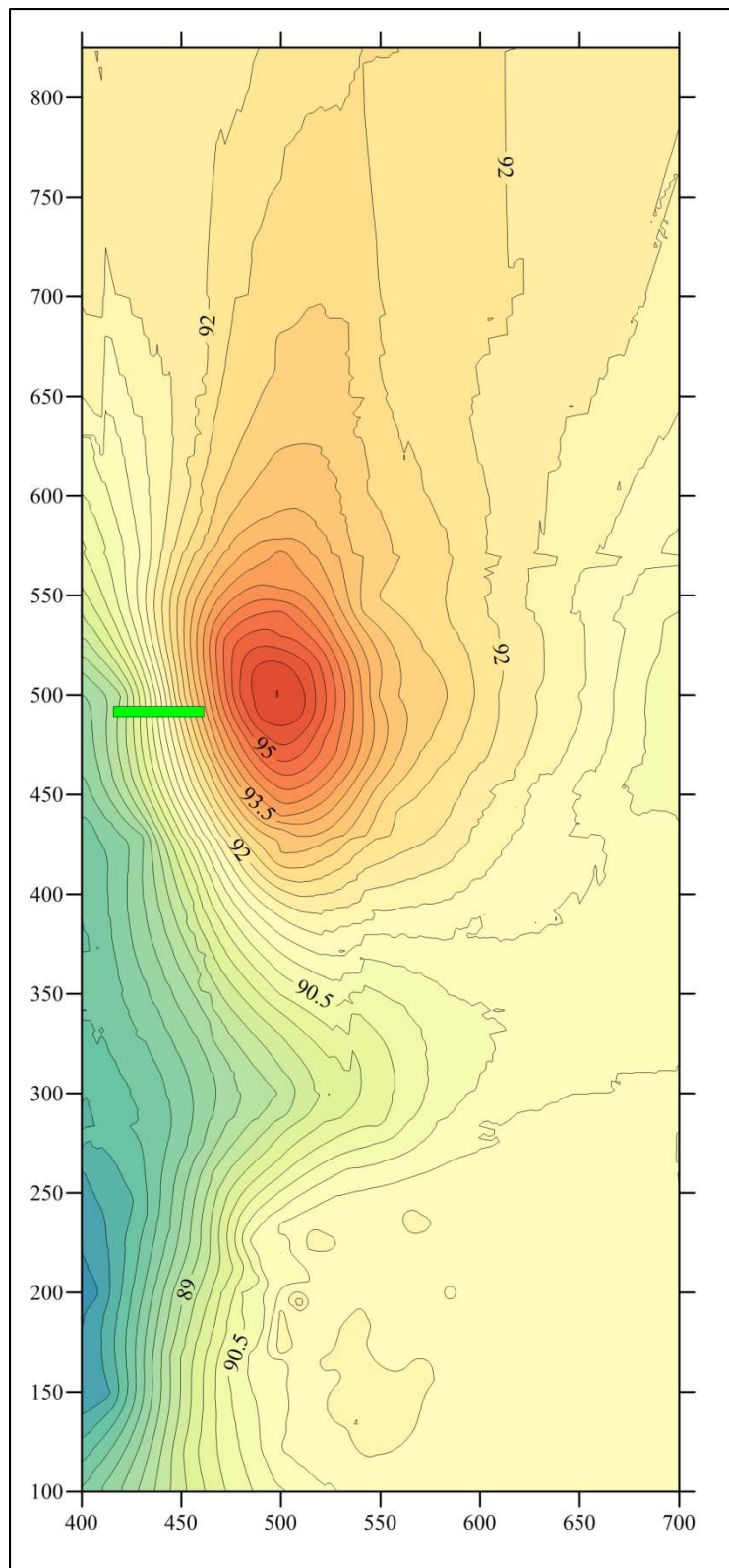


Figure 6. 1966 Excavations Locations Map (in Green).

1967 Season

This is the only season for which field notes are available, those of then young archaeologist Pat Garrow. He was in charge of the excavation for Huscher, and conducted quality systematic work over the mound area and to the north. His testing consisted of a series of 10 foot squares placed in trench and block form on the northern and southern parts of the northern mound, and series of squares along a north-south baseline at 50 foot intervals out to 300 feet north of the mound (Figure 7). The squares were typically dug in 6-inch intervals and the soil was hand screened, presumably through ½ inch wire mesh. The crew size was usually about seven people. On the mound summit, an area of yellow clay was discovered that was assumed to be part of the capping of the mound. This was traced with the excavation squares until it could be defined (Figure 8). Why it should have been extended off of the high area of the mound as defined by the topographic map is unknown. Further, it is not actually clear what the yellow clay area actually represented, but a cap does seem reasonable. It is interesting that it is generally rectangular in shape, and oriented slightly east of north.

A single 10-foot excavation square located on the northern edge of the mound located a series of burned logs, an area that was expanded during the 1968 season to reveal a large well-preserved burned structure. Few of the post hole maps from 1967 are available, however.

In the test square located at 700 North on Figure 7, Garrow located a series of post molds that seemed to be in a straight line running east-west, leading him to excavate another square adjacent to the east. This excavation began what became an on-going search for a hypothesized palisade line that would have at one time circumscribed the mound (or mounds?). It is not clear how far east and west the “palisade” was traced late in the 1967 season. Huscher was certainly interested in the find and initiated continued work on it early in the 1968 season,

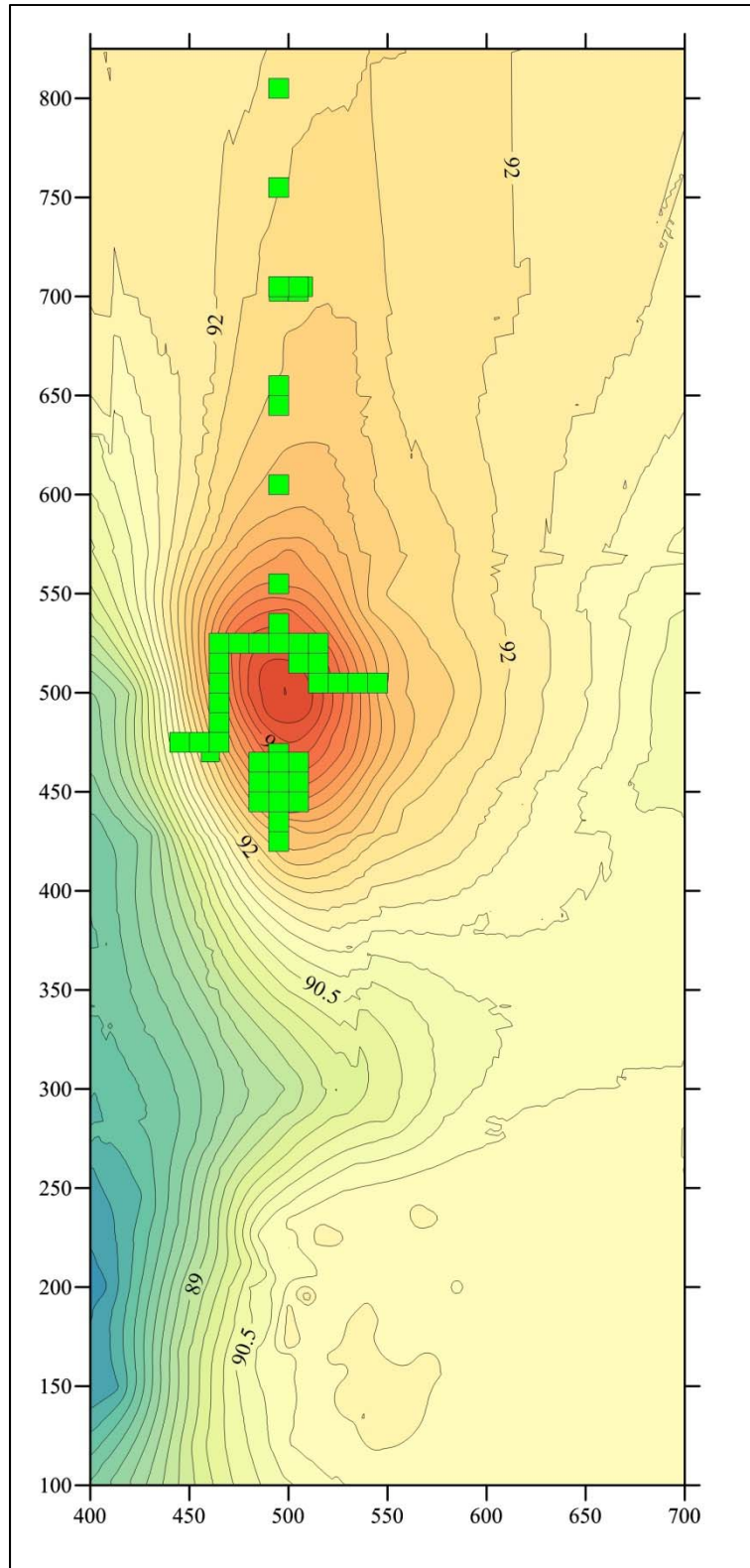


Figure 7. 1967 Excavations Locations Map.

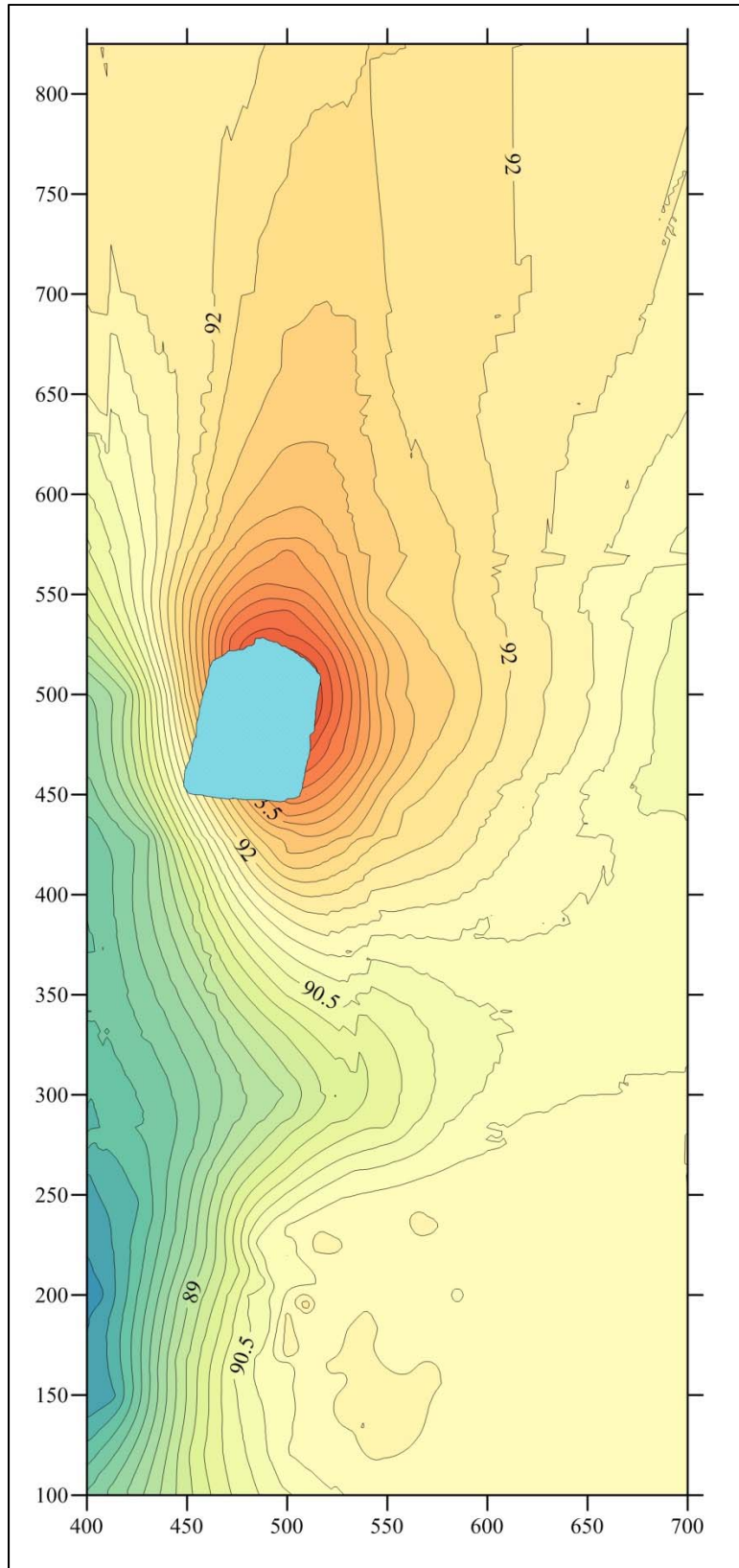


Figure 8. Yellow Clay Mound Layer (in Blue).

Late 1967 / Early 1968 Season

It is difficult to tell from the available dated excavation maps how much of the “palisade” was excavated late in the 1967 seasons and how much was followed early during the 1968 season, so I have combined the available maps for these two time periods into a single map (Figure 9). Further, I have modified the edges of the excavation units slightly to conform to where post molds were actually mapped. As can be seen from the excavations, the excavators believed the line of post molds curved down from the north to the eastern side of the site in the area explored. The reason I have put the word palisade in quotes up to this point is that the line that was quite clear in the north became increasingly vague as the excavations continued to the east and south. I also was told by Huscher many years ago that Arthur Kelly, the Principal Investigator for the entire West Point project, considered the tracing of a palisade line a waste of time compared to excavation of the mound—a very old fashioned perspective that rankled Huscher (who those who remember him rankled frequently and easily!). In Kelly’s defense, as I just said, the line of post molds was becoming very vague at best as the excavations proceeded. What is true, however, that many post molds, features, and artifacts were found along this entire excavated outside perimeter route. It would have been incredible if the area could have been scraped to reveal all the posts and features as was possible at other sites.

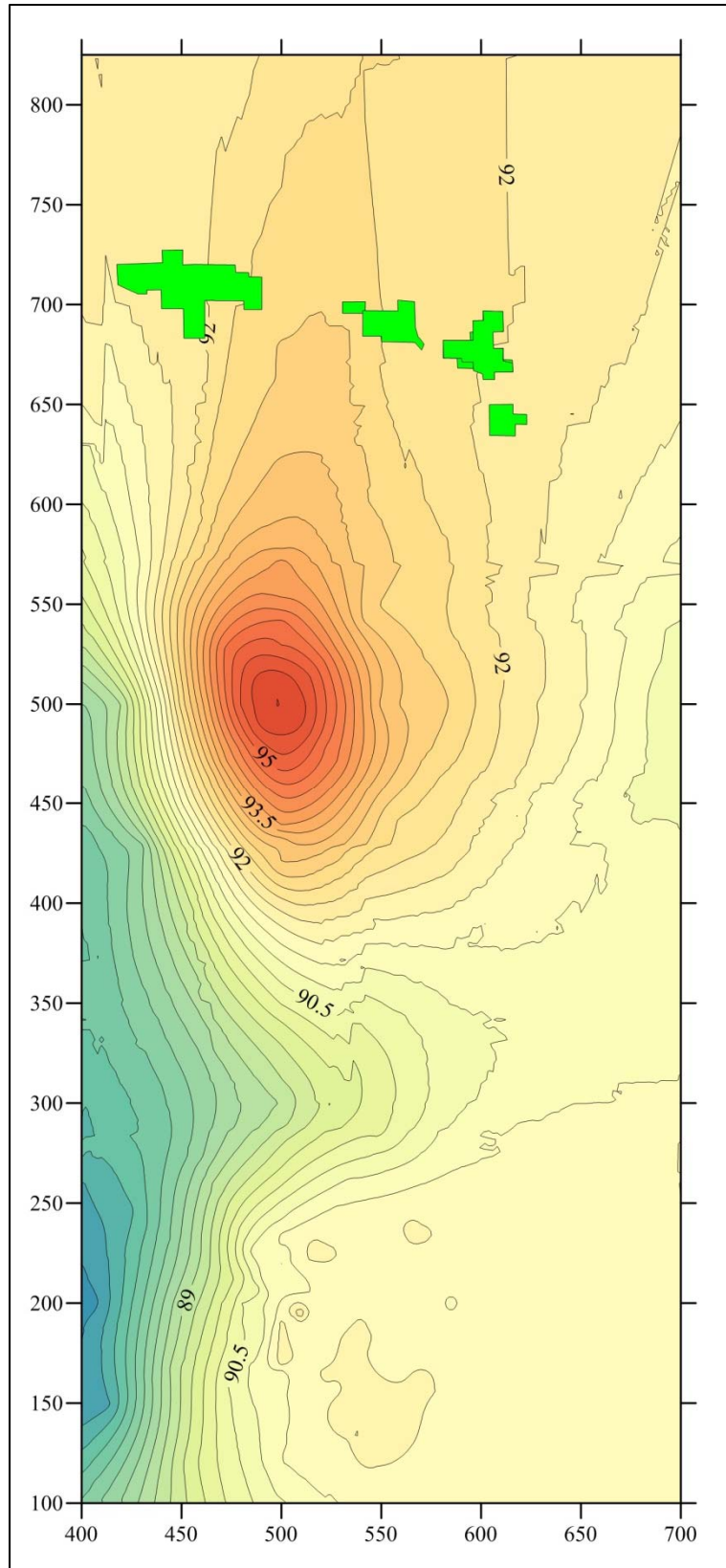


Figure 9. Late 1967 / Early 1968 Excavations Locations Map.

1968 Season

Probably more excavation took place in this season than in any other. Again, sadly we have no field notes, although we do have 61 excavation field maps with post and features drawn in. Indeed, these were the first items digitized for this project. The excavations for this season, not counting the part shown in Figure 9 just discussed, are shown in Figure 10. As shown, these include major excavations on the northern mound, and excavations in the south on and around the suspected area of the bulldozed southern mound. It is not known why there two separate southern excavation blocks—were they on the northern and southern edges of the destroyed mound? Why not excavate in the center area?

In the area of the northern mound, a major expansion was conducted on its northern edge to expose all the burned logs that defined the burned structure first encountered during the 1967 season. The apparent limits of this square structure were discovered. I will present more on this structure later, but would note here that it is curious that it is not on the summit of the mound. Perhaps what had been a circular mound was being transformed into a rectangular one.

Additionally excavations were also conducted on the eastern and southern peripheries of the northern mound. These presumably were exploratory in nature—perhaps they were looking for comparable burned structures on other parts of the mound edge, but this is unknown.

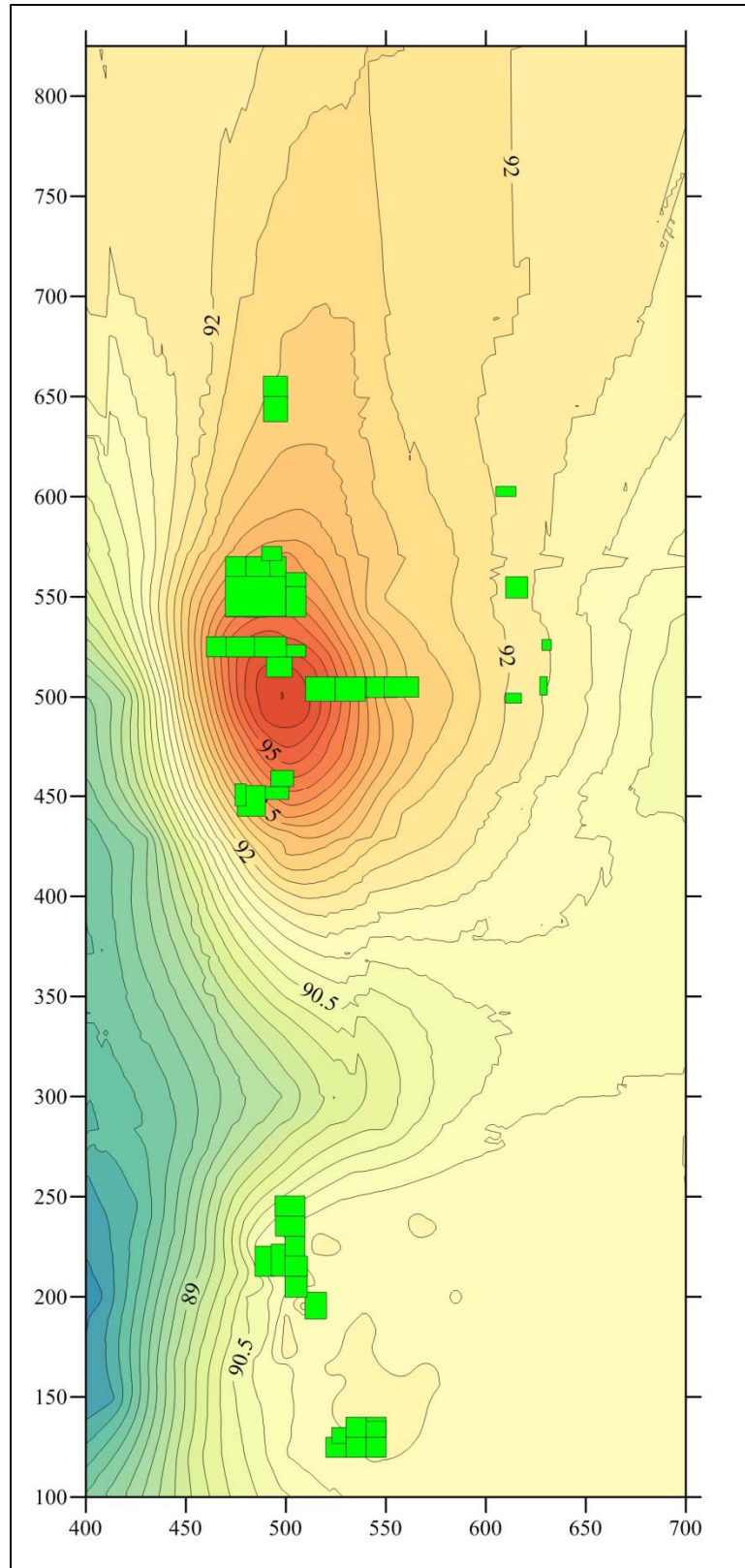


Figure 10. 1968 Excavations Locations Map

1969 Season

Figure 11 show the limited excavation conducted in the 1969 season. These were exclusively centered on the burned structure on the northern edge of the northern mound. I believe the burned logs were removed at that time and attempts were made to define the post molds under the logs for the structure represented by the burned logs. I should add here that the actual post molds for this structure were never clearly delimited. Instead, many posts were found that created a confusing mess that was never clear. Likely there were many posts from earlier structures mixed with the one that must have been associated with the burned timber structure.

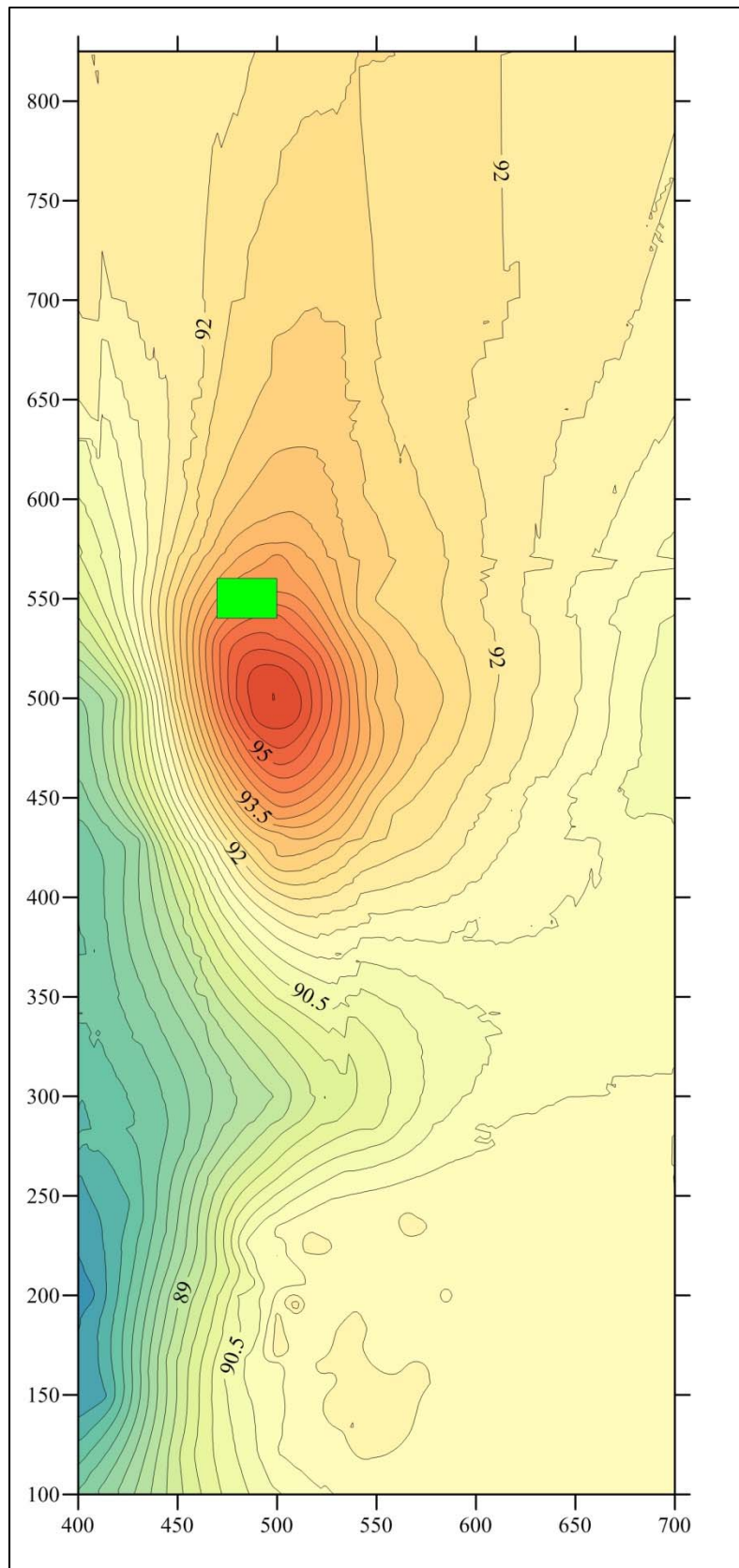


Figure 11. 1969 Excavations Locations Map.

1972 “Season”

This was a very short season in mid-December of that year, perhaps associated with a Christmas break for Huscher and a few students from the University of Georgia. The drawings available actually were drawn on December 12, and there is no way to know if all this work might have been accomplished on that same day. This work was represented by two excavation units placed on the south-center part of the northern mound (Figure 12). Why these units were placed here and what the goal was is unknown. A number of post molds were revealed. The numbers for these post molds started at 1 and Huscher continued this numbering without a gap when the 1973 work started in late January of the following month.

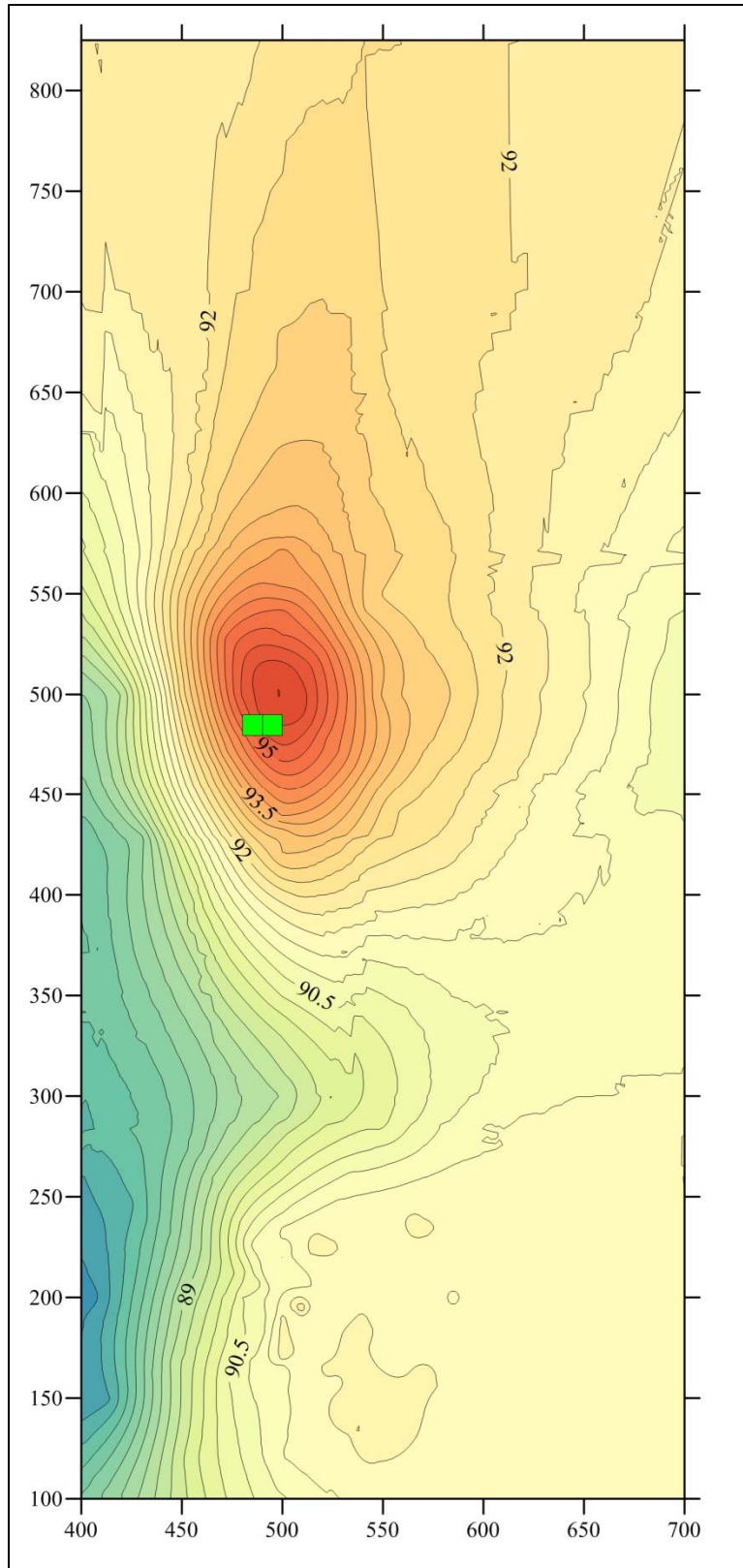


Figure 12. 1972 Excavations Locations Map.

1973 Season

This was the final season of archaeological excavation at 9TP64 (Figure 13). The season ran from late January until early June of 1973, and the work was concentrated in three locations. These were an expansion of the work the previous December on the center of the mound, an expansion of the 1968 work on the extreme eastern flank of the northern mound, and a block excavation area about 150 feet north, northwest of the mound. Terry Jackson, who was on the 1973 dig, worked on the mound area, and has told me they were trying to define a structure with the mound excavations. Likewise, there are indications that Huscher was trying to define a structure in the northwestern excavation block also. The post hole patterns revealed in both places are not very clear, however.

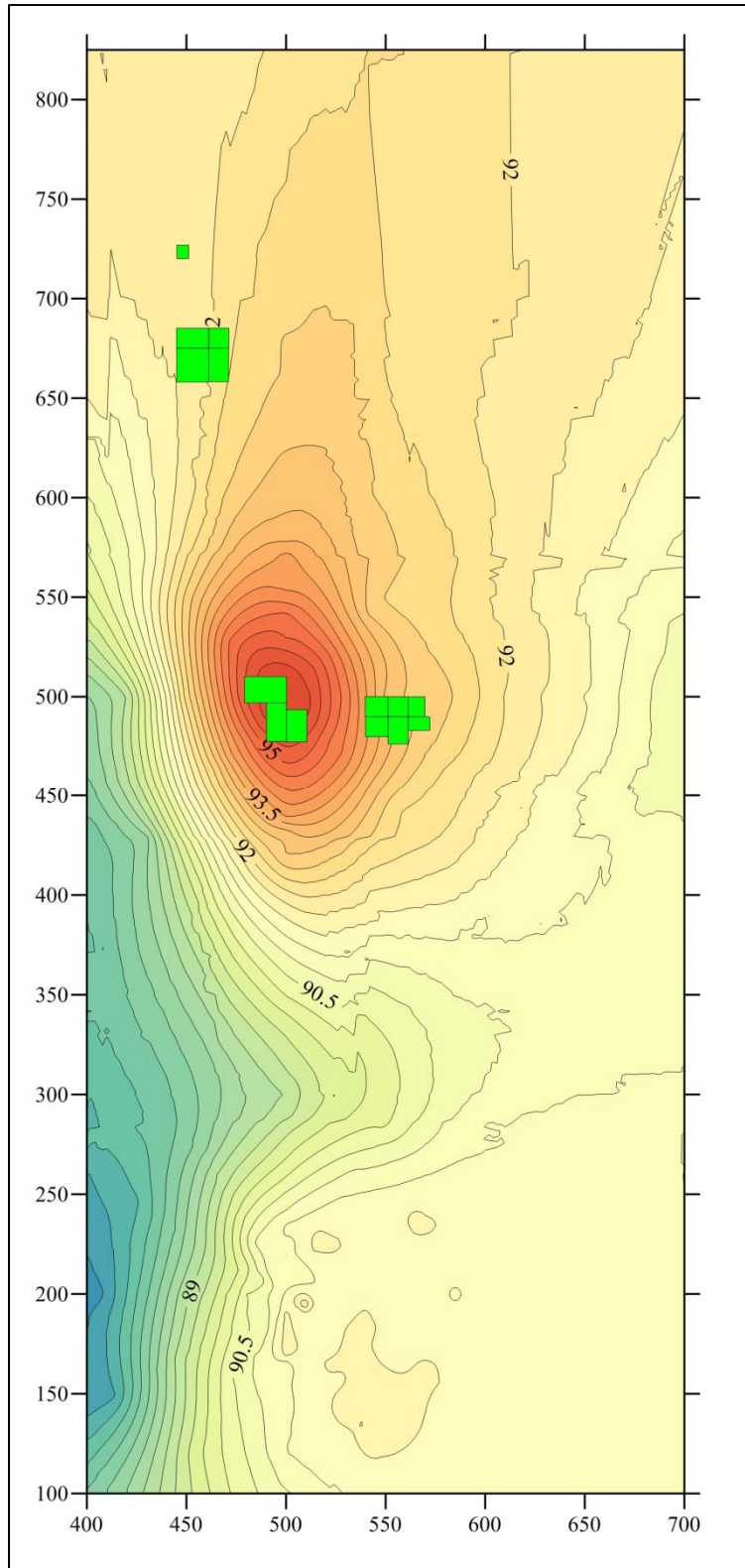


Figure 13. 1973 Excavations Locations Map.

All Seasons

Figure 14 shows all the multiple seasons of excavation at the Avery site in a single drawing. Clearly there were three main area of work at the site. The first, not surprisingly was on and around the low mound in the north center part of the site. The second was in the northern part associated with the attempts to trace a possible palisade line around the site, and possibly defining a structure there. The third area was in the south in the general area of the bulldozed southern mound. The limits of excavation I have settled upon for this map is probably not perfectly accurate, but it is likely about as good as can be reconstructed at this late date. Many of the plan maps showing post molds do not show the limits of the excavations, so much ambiguity is unavoidable at this time. One thing is clear for this site, however—the amount of excavation, large as it was, was inadequate to understand the site in my opinion. This is one that really should have been stripped with heavy machinery.

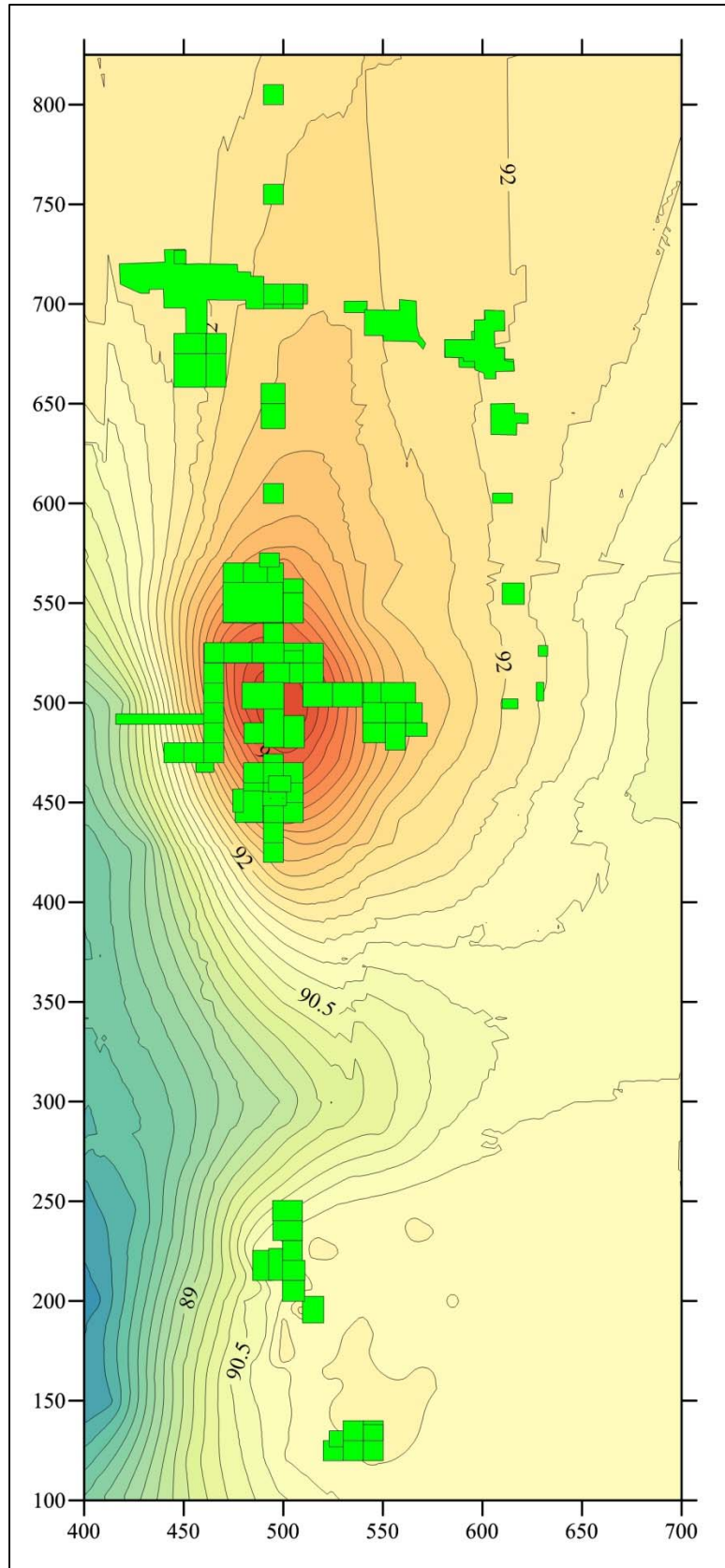


Figure 14. All Excavations Locations Map.

Features

In the six seasons of work at the Avery site approximately 176 feature numbers were assigned. The actual number is somewhat less than that however. Compiling this list was not an easy task! Several numbers were never used. Also there was an odd use of the concept of “Feature” in 1967 that gave separate feature numbers to burial pits and the actual included human remains, further confusing the situation. The data recorded for the individual features varies widely, from excellent to non-existent. Rather than present traditional written descriptions of all the features, I have simply created a table that present all the relevant information. This should aid future researchers of this important dataset well. All those that could be mapped are presented in the many site excavation drawings included later in this report. I have estimated the size of many features where the exact sizes were never recorded from an examination of the field drawings. These are marked in the size section of the table below as approximate (Ca.).

Number	Date	Description	Size in Feet
1	July 22, 1966	Rock Pile	4 by 2.5
2	1966	?	
3	1966	?	
4	1966	?	
5	July 7, 1967	Burial Pit, Contains Feature 20 Burial	3.8 by 2
6	July 7, 1967	Burial Pit, Contains Feature 30 Burial	Ca. 4
7	July 7, 1967	Circular Pit	Ca. 1.2
8	July 7, 1967	Pit	Ca. 1.6
9	July 7, 1967	Infant Burial, Contains Feature 43 Burial	1.8
10	June 22, 1967	Oval Pit	Ca. 5
11	June 22, 1967	? Pit	Ca. 5
12	June 22, 1967	?	
13	September 1, 1967	Burned Corn Cob Pit	0.5
14		Same As Feature 5-Burial	
15	July 25, 1967	Pit	Ca. 4
16	August 21, 1967	Pit	Ca. 3

Number	Date	Description	Size in Feet
17	July 26, 1967	Shallow Pit	Ca. 1.4
18	August 7, 1967	Burial Pit, Contains Feature 32 Burial	2.7 by 1.5
19	July 28, 1967	Not A Pit-Where Clay Cap Plowed Off Revealing Midden Below	Ca. 5 by 2
20	July 24, 1967	Burial in Feature 5 Pit	
21	August 21, 1967	Pit?	Ca. 5 by 3
22	?	?	
23	July 26, 1967	Shallow Pit	
24	August 1, 1967	Large, Irregular Trash Pit	Ca. 4
25	August 1, 1967	Burned Corn Pit	Ca .5
26	August 1, 1967	Burned Corn Pit	Ca. .6
27	August 9, 1967	Pottery Cluster	Ca. 1 foot
28	August 9, 1967	Pottery Cluster	Ca. 1.8
29	August 9, 1967	Pottery Cluster	Ca. 2
30	July 28, 1967	Burial in Feature 6	
31	August 9, 1967	Fire Pit	
32	August 7, 1967	Burial in Feature 18	
33	August 14, 1967	Fire Pit	Ca. 1.5
34	August 23, 1967	Burial Pit Contains Features 37, 38, and 44	5.2 by 3.0
35	August 21, 1967	Burial Pit Contains Burial Feature 36	1.5 by .7
36	August 21, 1967	Infant Burial in Feature 35	
37	August 23, 1967	Burial (Same As Feature 38?) in Feature 34	
38	August 23, 1967	Burial in Feature 34	
39	?	?	
40	September 1, 1967	Pit With Bear Jaw	1.9
41	August 30, 1967	Pit	Ca. 1.5
42	August 30, 1967	Pit	Ca. 1.7
43	September 1, 1967	Burial in Feature 9	
44	August 25, 1967	Burial, 2nd in Feature 34	
45	Void	Void	
46	Void	Void	
47	Void	Void	
48	Void	Void	
49	Void	Void	
50	1968	Palisade Line	
51	July 19, 1968	Burial	.7 by 2.3
52	July 18, 1968	Baby Burial, Same As Feature 43?	
53	July 19, 1968	Burial?? or Basket Load	
54	July 19, 1968	Burial?? or Basket Load	

Number	Date	Description	Size in Feet
55	July 19, 1968	Void, Basket Load	2.8
56	1968	Small Midden Filled Pit	
57	1968	Oval Pit	
58	1968	Small Midden Filled Pit	
59	1968	Daub Concentration	
60	July 22, 1968	Whole Vessel in Post Hole or Small Pit	1.5
61	July 22, 1968	Midden Area	Ca. 5
62	July 24, 1968	Small Oval Midden Pit	Ca. 1.3
63	1968	Pit With Bear Jaws	
64	July 22, 1968	Small Midden Pit, Very Shallow	Ca. 2.4
65	1968	Pit, Probably Just Midden Area.	
66	July 22, 1968	Pit, Part of Midden Filling Gully	Ca. 4.0
67	July 22, 1968	Pit, Part of Midden Filling Gully	Ca. 3
68	July 22, 1968	Pit, Part of Midden Filling Gully	Ca. 3
69	July 25, 1968	Trash Pit?	Ca. 6
70	July 24, 1968	Pit, Shallow Plow Drag	3.4 by 2
71	1968	Pottery Feature	
72	August 23, 1968	Burned Logs (Building)	
73	July 25, 1968	Small Pottery Vessel, Infant Burial	2.3 by 1.5
74	July 30, 1968	Clay Filled Burial	Ca. 3.2 by 2.2
75	July 29, 1968	Burned Feature	Ca. 4
76	1968	Dark Brown Pit, Part of Midden Filled Gully	
77	July 30, 1968	Dark Brown Filled Pit, Very Large Trash Pit	Ca. 7
78	1968	Sand Filled Pit, Part of Midden Filled Gully	
78B	1968	Burned Red Clay Area	
79	1968	Sand Filled Pit, Part of Midden Filled Gully	
80	July 31, 1968	Pottery Vessel in Feature 72 Area	1.0
81	August 5, 1968	Small Midden Filled Pit	Ca. 2
82	1968	Clay Filled Pit, Became 3 Postholes	
83	August 1, 1968	Clay Filled Pit, with Whole Vessel	Ca. 4 by 2
84	August 5, 1968	Dark Pit-Like Discoloration, Probably a Tree	Ca. 2
85	August 5, 1968	Tree Hole	Ca. 2.5 by 1.5
86	August 5, 1968	Clay Filled Pit	Ca. 2.1
87	August 5, 1968	Clay Filled Pit	Ca. 2.3
88	August 6, 1968	Large Clay Filled Pit	Ca. 6
89	1968	Broken Pottery Vessel	
90	August 8, 1968	Pit (Probably Not)	Ca. 6 by 2
91	August 8, 1968	Pit (Probably Not)	Ca. 4.5

Number	Date	Description	Size in Feet
92	1968	Rock Lines On South Side of Mound	
93	August 9, 1968	Pit?	Ca. 3.8 by 2.8
94	August 13, 1968	Burial	2.6 by 1.4
95	1968	Postholes	
96	August 13, 1968	Burial	3.4 by 1.8
97	August 19, 1968	Burial	2.7 by 1.4
98	August 19, 1968	Discoloration (Not A Pit)	Ca. 5 by 2
99	August 19, 1968	Burial	Ca. 5 by 4.2
100	August 29, 1968	Burial With Burned Daub And Yellow Clay	2.8 by 1.9
101	August 21, 1968	Red Burned Clay Area	Ca. 2
102	August 21, 1968	Large Post Hole, Burned Daub And Charcoal	Ca. 1.6
103	August 22, 1968	House Pattern in South End of Site	
104	August 21, 1968	Burial, Yellow Clay And Burned Daub	2.9 by 1.4
104B	August 30, 1968	Burial, Under Feature 104	
105	1968	Dark Midden—Not A Feature	
106	1968	Dark Midden—Not A Feature	
107	1968	Gully Filled With Midden	
108	1968	Corn Cob Pit	Ca. .5
109	1968	Burned Daub And Pottery	
110	June 17, 1969	Pit in Floor Below Burned Building	Ca. 2.5
111	June 17, 1969	Pit in Floor Below Burned Building	Ca. 3
112	June 19, 1969	Pit in Floor Below Burned Building	Ca. 5.5 by 3.5
113	June 23, 1969	Burned Trash Pit	Ca. 3
114	June 23, 1969	Burned Pit	Ca. 2.5
115	June 24, 1969	Burned Clay And Charcoal Pit	Ca. 3.5 by 2.5
116	June 24, 1969	Pit With Pottery And Bone	Ca. 3
117	June 25, 1969	Pit With Pottery And Bone	Ca. 3 by 2.5
118	June 25, 1969	Charcoal Pit,	Ca. 3
119	June 25, 1969	Clay Filled Pit	Ca. 1.5
120	Void	Void	
121	Void	Void	
122	Void	Void	
123	Void	Void	
124	Void	Void	
125	February 7, 1973	Infant Burial	1.9 by 1.3
126	February 9, 1973	Clay Filled Pit	Ca. 3
127	1973	Charred Timber	
128	1973	Possible Burial	

Number	Date	Description	Size in Feet
129	February 14, 1973	Clay Filled Pit with Small Bowl	2.1 by 1.8
130	February 16, 1973	Charred Timber	Ca. .8
131	February 16, 1973	Possible Ditch	
132	February 16, 1973	Turtle Shell in Feature 131	Ca. 1
133	February 21, 1973	Burned Timber Layer	Ca. 1
134	February 28, 1973	Corn Cob Pit	Ca. 1
135	1973	Corn Cob Layer	
136	February 27, 1973	Baby Burial	Ca. 3.5
137	March 14, 1973	Burned Timber	Ca. 3.5 by .5
138	March 14, 1973	Child Burial?	Ca. 1.5 by 1
139	March 22, 1973	Turtle Shell in Pit	Ca. .8
140	March 28, 1973	Post Hole Size Pit with Bone	
141	1973	Burial Pit	
142	March 26, 1973	Charred Timber	Ca. 2
143	March 27, 1973	Possible Baby Burial Pit / Fire Pit	Ca. 1.5
144	March 27, 1973	Possible Burial Pit	Ca. 1.5
145	March 28, 1973	Fire Pit	Ca. 1
146	March 28, 1973	Burned Area, Ash Bed	Ca. 3
147	April 14, 1973	Burial Pit	3.2 by 1
147B	April 16, 1973	Burial Under Feature 147 Burial, also F150	
148	March 28, 1973	Burial Pit	Ca. 3 by 1.5
149	March 28, 1973	Burial Pit	Ca. 2.5 by 1.5
150	April 16, 1973	Burial, Same As 147B; Also a Burned Clay Area—Defined Twice	
151	1973	Post Sized Pit	Ca. 1.3 by .5
152	1973	Post Sized Pit	Ca. .6
153	March 28, 1973	?	
154	April 14, 1973	Burial,	Ca. 3.5 by 2.1
155	April 17, 1973	Corn Cob Pit	0.5
156	April 21, 1973	Burial Shaped Pit?	Ca. 2.5 by 1.5
157	April 20, 1973	Midden Filled Pit	
158	May 2, 1973	Burial	
159	May 2, 1973	Burial	Ca. 2.5 by 2
160	May 7, 1973	Burial, Child	2.0 by 1.0
161	April 27, 1973	Post Sized Charred Pit	Ca. .8
162	May 7, 1973,	Burial, Adult	4.0 by 2.0
163	April 27, 1973	Pit	Ca. 1.5
164	April 27, 1973	Pit	Ca. 1.5 by 1.0
165	April 27, 1973	Yellow Clay	

Number	Date	Description	Size in Feet
166	April 27, 1973	Yellow Pit	Ca. 1.5 by 1
167	May 1, 1973	Yellow Clay Corn Cob Pit	1.6
168	June 4, 1973	Baby Burial	Ca. 1.5 by .8
169	June 4, 1973	Post Sized Pit	
170	June 4, 1973	Corn Cob Pit	Ca. 1
171	June 4, 1973	Corn Cob Pit	Ca. 1
172	1973	?	
173	1973	?	
174	June 2, 1973	Small Pit	Ca. 1.2
175	1973	?	
176	1973	?	

Table 1. Features Defined at the Avery Site.

Post Molds

The total number of post molds recorded from Avery is difficult to determine. I have digitized almost all of the 300 plus plat maps from the site but some areas were mapped several times and different numbers of post molds were recorded with each mapping. This is to be expected in a site that was worked on for so long, and with different crews and crew chiefs almost every season. To the best of my ability I have accounted for 1464 recorded posts from all the different mapped excavation areas at the site. Post holes were labeled in the field numerically within the vicinity of large features. Thus post molds “near” Feature 33 would be labeled as 33-1, 33-2, etc. This “system” is not to be recommended and added to data confusion.

All of these are presented in Figure 15. I fully realize that such a map is laughable in terms of interpretation. I could show zooms of all the different areas, but having done so for myself, I see very few if any clear patterns in the existing post data. This is even true for the burned structure on the northern edge of the northern mound.

The GIS data are all available at the University of Georgia Laboratory of Archaeology for any enterprising young archaeologist who wishes to examine the post data further. Good luck to you!

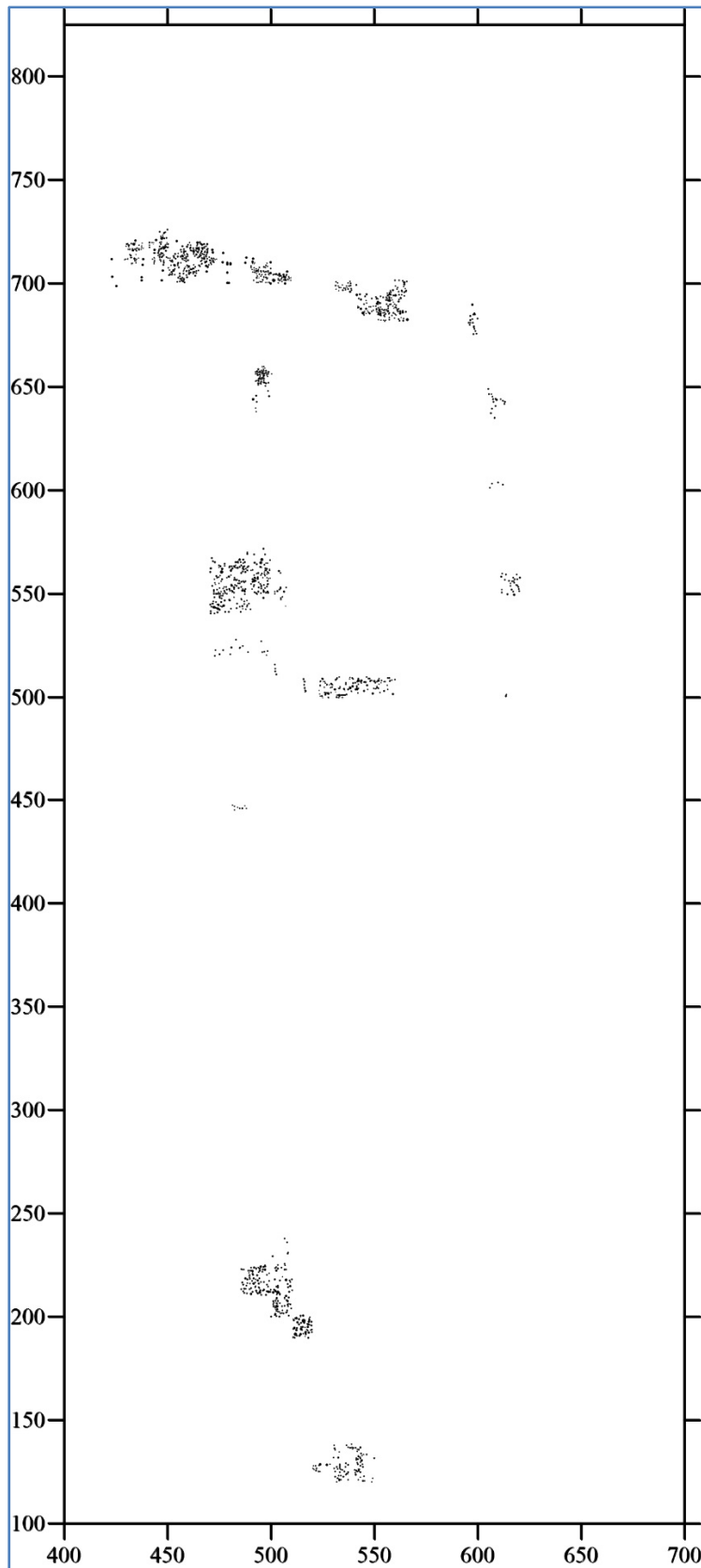


Figure 15. All Post Molds Recorded.

Artifacts

The artifacts from the Avery site have never been adequately analyzed. I certainly did not have time to take on this enormous task for this report. There literally are thousands of sherds, if not tens of thousands, well curated in boxes at the University of Georgia Laboratory of Archaeology in Athens. The analysis will be complicated by the great many collection locations listed in the site catalog. I am presenting a version of the site catalog here in Appendix 3 for future researchers. The catalog itself has a number of problems, and this presentation is the best currently possible.

Based upon a limited inspection of the artifacts by myself in the 1960s and Gail Schnell independently in the early 1970s, we both agree that the vast majority of the collection is from the Lamar period (ca. A. D. 1350-1500). There were no early historic items from the site from the 16th or 17th centuries to my knowledge. We do not know how large the mounds were, but I personally doubt if the site was occupied more than 100 years. Where it might fall in terms of Lamar phases defined for the Chattahoochee Valley is also currently unknown.

I am including the short ceramic analysis paper by the late Gail Schnell as Appendix 2 of this report. In 1969 and 1970 she studied the few partially reconstructable ceramic vessels recovered from the site and saw them as representing a Lamar occupation.

Summary

A report on a major Georgia archaeological excavation from almost 60 years ago is obviously way overdue. Unfortunately, the present report is but a sliver of what analyses could and should be performed on this important data set. Avery was a moderately large two-mound Native American community in a huge bottom land portion of the Chattahoochee River near the Georgia Fall Line. They would have had no trouble growing sufficient corn, beans, and squash in those now-gone fertile bottomlands.

Avery was only a few miles from the Park Mound site (9TP41) at the junction of Yellow Jacket Creek and the Chattahoochee River (Hally and Oertel 1977). The relationship between these two sites has not been adequately studied. Were they coeval in time, or, as I suspect from other research into Georgia Late Mississippian mound centers, alternating in occupation through time (Williams and Shapiro 1991). Given that we cannot conduct more research directly on either the Avery or Park sites, a future detailed of the ceramics from both sites should allow us to answer these chronological questions.

Now that I have opened the door to future researchers to examine the data from this now lost, but important site, I only hope it will not be 60 more years before some young archaeologists takes up the mantle to work with the data from the Avery site.

References Cited

Hally, David J.

- 1970 Archaeological Investigations at the Potts' Tract Site (9MU103) Carter's Dam, Murray County, Georgia. *University of Georgia Laboratory of Archaeology Series Report 6*. Athens, Georgia.

Hally, David, J., and Leila Oertel

- 1977 *Archaeological Excavations at the Park Mound Site (9TP41), Troup County, Georgia, 1972 Season*. Manuscript on File at the University of Georgia Laboratory of Archaeology, Athens.

Williams, Mark, and Gary Shapiro

- 1991 Paired Towns. In *Lamar Archaeology, Mississippian Chiefdoms of the Deep South*. Edited by M. Williams and G. Shapiro. Pp. 163-174. University of Alabama Press, Tuscaloosa.

Appendix 1
Huscher's 1971 Summary of Work at the Avery Site
(Note that there has never been a summary of the 1973 season at the site)

62

THE AVERY MOUNDS (9 TP 64)

1966 Season

In 1966 preliminary investigations were made at the Avery and Potts Mounds on the Avery property (old Potts Plantation) on the east side of the Chattahoochee River, just above the dam site. The Avery Mound, the northernmost of the pair, has been truncated and eroded by a century of cultivation and weathering, but there is still evidence of the margins of the mound and that probably two stages of building can be separated here. The sub-mound zone is demarcated by a pronounced dark soil horizon, and the underlying fill contains Archaic flints. Three hundred feet to the south are the remains of an additional mound, the Potts Mound, which was bulldozed in field leveling some years ago, but which is still recognizable in outline. There is a large village area around these two mounds which have yielded surface collections indicating a late Lamar component, with a probability of an earlier, as yet unidentified Mississippian component, the problem being the degree of separation still possible by a careful working of the mound margins and of separate pits for "pure" samples. The site was recognized as of high priority and scheduled for additional work in 1967.

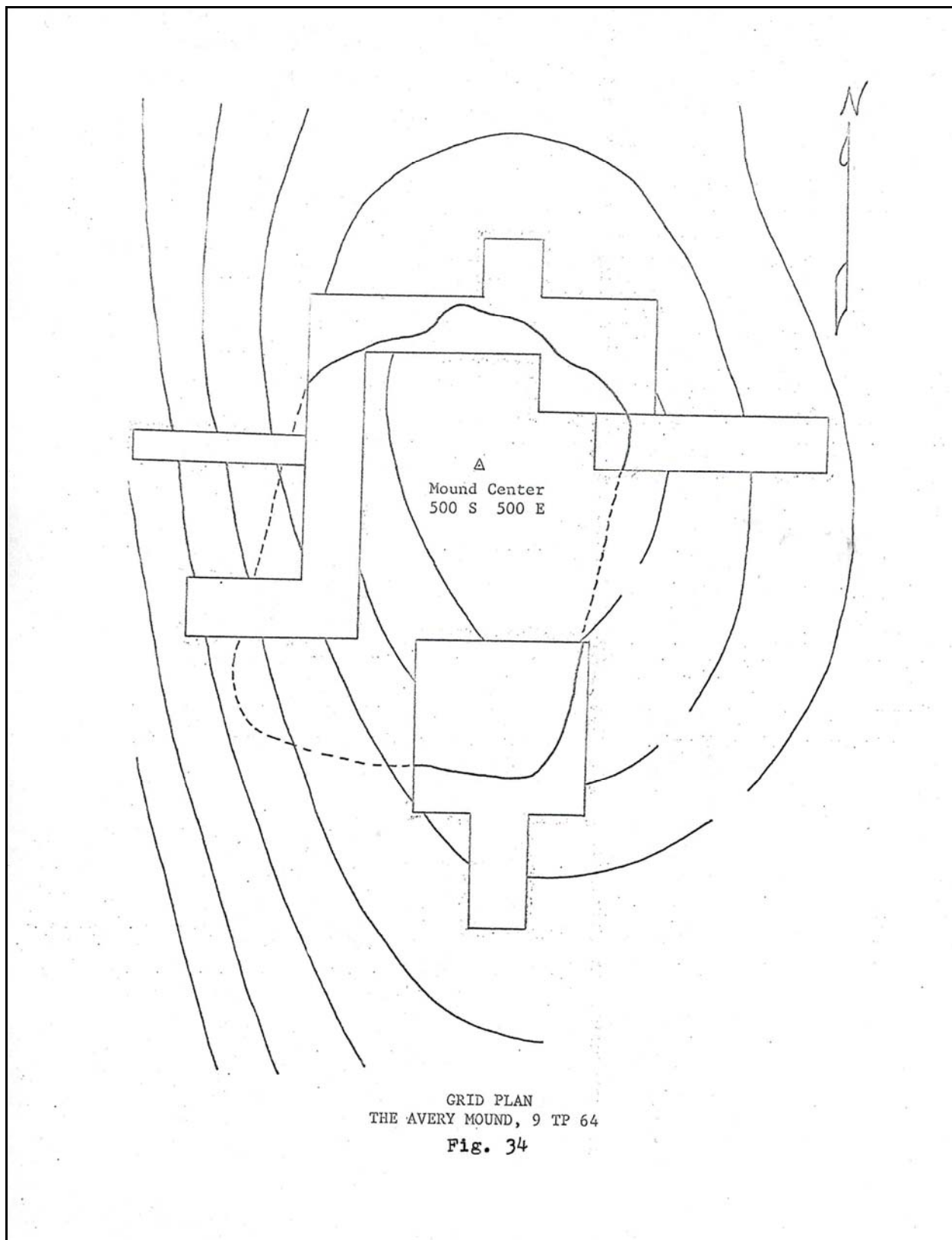
1967 Season

In June 1967, the grid was reset and extended, the 1966 test trench cleared and an additional line of six 10 x 10's dug at spaced intervals on a line extending north from the

center of the Avery mound (northernmost of the pair of mounds), all dirt power screened through 3/8 inch mesh. Several of these tests uncovered postholes; one, in particular, at 200 feet north of the mound center (at 290-300 S, 490-500 E; mound center taken as 500 S. 500 E) showed a great many postholes and several pits, probable burial pits to judge by the profiles. At the end of the year the margins of the mound were being cleared by surface stripping to determine size and evidences of serial rebuildings (Fig. 34).

1968 Season

The Avery Mound Site (Avery Mound, Potts Plantation) above Maple Creek on the east side of the Chattahoochee River was closed down at the end of the 1968 season with a long run of palisade line showing continuously for 300 feet, and with strat cuts in the mound showing an increasing probability of a complex multiple component mound. Strat cuts on four sides of the mound were unsatisfactory until late in the season when a series of overlapping clay bands indicating successive mound rebuildings and refacings were noticed in the south trench, no great time interval between facings implied. Important however was the identification of a curvilinear line of postholes below the caracol-like sub-mound or core-mound something like the one noted at the Gary's Fish Pond Mound (9 QU 1) at Georgetown, Quitman County, Georgia. A completion of a cut directly through this mound would be justified. The palisade line, now traced through more than 300 feet, indicates an



elaborate carefully planned and constructed fortification system. The questions of the presence of tower bastions, or protected entrances, or the mechanics of the corner constructions have been obscured by conflicting or ambiguous post-line intersections of areas of unreadable clay. I suspected that the Cool Branch Site, 9 QU 5, where similar unreadable raw red clay areas occurred, that perhaps the palisades simply dipped below the clay, the explanation being that the clay represented the additional weathered wall coating of the defensive towers, but such areas would have to be dug in the spring before the clay had a chance to bake. Because of the inter-regional importance of these specific questions at least some additional work should be undertaken here, but I would be reluctant to commit a full crew here for an indefinitely extended period of time, at the expense of comparative investigation of additional sites upstream.

1969 Season

9 TP 64, the Avery Mound Site (Potts Plantation) was worked to the extent of completing the excavation of a large burned building at the North margin of the mound. The area had been stripped (1968) to the level of the burned timbers and these had been recorded in position marking a rectilinear area with some evidence of an octagonal pyramidal roof framing. In 1969 the area (nine 10 x 10 squares) was taken down two more 0.5 foot cuts, or one additional foot, all material screened, removing the burnt wattle layer, the actual packed floor layer, and uncovering the underlying main post pattern. No additional

work has been possible on the palisade problems, or the probable circular caracol core mound. The minor Durand's Bend (Alabama River Phase) pottery component noted previously proves consistent in the 1969 sample so it is not to be dismissed as a freak occurrence or a plant. Wauchope had noted the type (frequency not noted) from Bartow County, the Two Run Site, 9 BR 3 (1966, fig. 230-y) and it is known from the Broken Arrow (Thlekatska) Site south of Phenix City, but the type area is in West Central Alabama.

The Avery Mound is much more definitely related to the Fall Line Sites¹ than is the Park Mound from which it is sharply distinct.

¹ A detailed study of the pottery of Avery Mound is appended to this report, Appendix I.

Appendix 2

Gail Schnell 1970 Paper on Ceramics from Avery Site

80

A COMPARATIVE ANALYSIS OF THE CERAMICS FROM THE AVERY MOUND, TROUP COUNTY, GEORGIA

by Gail S. Schnell

The Avery Mound, 9 TP 64, is on the left bank of the Chattahoochee River in Troup County, five miles northeast of West Point, Georgia. In the original title of this paper, the name "Potts Mound" was used for this site. Until recent years, the site was owned by the Potts family, the original Potts Plantation dating from 1827. Since, however, the name "Potts" has already been used for a site in northwest Georgia, known to many as Potts Tract, the name of the present owner of 9 TP 64 will be substituted; henceforth the site will be referred to as the Avery Mound.

Avery Mound was excavated during the 1966, 1967, and part of the 1968 summer field seasons under a National Park Service contract with the University of Georgia, and was locally sponsored by the Chattahoochee Valley Historical association. Work was begun under the direction of Mr. Pat Garrow, and completed under the direction of Mr. Harold Huscher, whom I would like to thank for his help with this report.

The site is a low, rectangular, clay-capped, platform mound 150 feet from the banks of the river, with an occupation area extending about 200 feet upstream to the north, and about 300 feet downstream to the south. The mound, which had been plowed down, was trenched from three sides, exposing two mound building levels, and a pre-mound occupation level delimited by a circular line of closely spaced post molds, the posts set

vertically in a narrow trench.

On the north margin of the mound, a large, rectangular building had burned, leaving a fairly rich layer of burned wattle sealing the floor level. One hundred feet to the north of the mound, a nearly straight palisade line was noted on a bearing just north of east. The posts again were set at close intervals in a narrow trench. Several additional lines of posts intersected the palisade line, but it was not possible to determine the presence or absence of towers or bastions, or elaborated gateways. A very confused post hole concentration at the northwest corner of the enclosure concealed the most probable location of a corner tower. A number of burials were found in separate pits along the north palisade line, closely flexed, and usually lying on the left side, the head facing east.

The present paper deals with pottery types recovered from this site, illustrated by selected partially restored specimens, and briefly identified by provenience and association. Thirty-one vessels are represented in the sample being used. The sample does not necessarily reflect the relative amount of each type of pottery represented, but does indicate the range of types found at the site.

One problematic vessel (fig. 35-36) may represent an occupation prior to the main one at the site. This vessel, which was found in the east edge of the mound, but not in the last mound level, is tempered with coarse sand, has a medium rough core texture, and a fairly smooth surface. It is a fairly

small bowl with a double line looped incising near the rim. It is much rougher than the Lamar Bold Incised vessels also found at the site, and is thought to be an early "Mississippian"-related vessel, most closely resembling the shell tempered Shine Incised from Alabama described by Chase (1967, p. 49; 1968, p. 18 - note errata sheet). A specific description is included at the end of this paper.

Two Pensacola Plain rim sherds (fig. 37 a-b) are associated with the main occupation of the site. One was found in a midden area with post holes (feature 105) three hundred feet south of the mound, and the other in the area of the large rectangular burned building. This type is especially distinguished by everted rims with small strips or pseudo-handles, in the neck region. The type, originally defined by Willey (1949, pp. 463-464) and described by John Cottier at the Lidell Site (Cottier, 1965), is found in the proto-historic Alabama River Phase (Cottier, 1970). It is also well represented at the historic site of Taskigi in Alabama (Fundaburk and Foreman, 1957, pl. 113-114). Finally, an example is illustrated by Holmes (1903, pl. LXIIa).

Two Cool Branch Incised vessels were found, a grit tempered specimen (fig. 38) with large inclusions of white grit, from a pit, and a shell tempered specimen. The core color varies from grey to buff, as do the surfaces, depending upon the amount of oxidation or reduction on a particular portion of the vessel. The rims of both are everted, that of the shell tempered vessel being also thickened to a considerable

extent. The vessels are globular in shape, with a constricted neck area. The grit tempered vessel has a noded loop handle. Both vessels are decorated with a wide arched incising (trailing) applied when the vessel is fairly wet. Fine incising extends upward from this wide line; in the case of the shell tempered sherd, it also crosses it. Cool Branch Incised, as defined by Sears (1967, pp. 32, 37, 55) is the Chattahoochee Valley variant of what is called Moundville Incised (DeJarnette and Wimberly 1941, p. 83; Heimlich 1952, pp. 24-25, 65; Wimberly 1960, pp. 184-185; McKenzie 1965, pp. 61-62) further west. The type description is based on specimens from the Spann's Landing site in Alabama, north of Fort Gaines, and the Cool Branch Site in Georgia, opposite Eufaula, Alabama. It is characterized by considerable variation in paste and firing atmosphere. Similar pottery was found at the Rood's Site, where it was called "Pinellas Incised A", and was attributed to the pre mound level (Caldwell 1955, pp. 37, 40, 41, Fig. 6). Indicating southern relationships, a similar form, with fingernail punctates above the arched line instead of cross slashes, is called simply Pinellas Incised by Willey (1949, p. 599, Pl. 51). In view of Sears' and Willey's evidence, the two vessels are thought to represent part of the major occupation at the Avery Mound site.

The majority of the vessels studied can be assigned to various Lamar types. Almost a third of these vessels are Lamar Bold Incised, indicating that this was a relatively late Lamar occupation.

Lamar Plain pottery has the greatest representation, by a small margin. One vessel with small loop handles, a constricted neck and everted lip (fig. 39) is from the area of the burned building, as are two very thick, straight rim sherds (fig. 40), representing different vessels, of the rim shape described by Wauchope (1966, p. 86-87) in his description of Lamar Plain Smooth from the Shellman site. On these latter two sherds, one lip is rounded, the other flat; the rim of the former being slightly flared out. The rest of the Lamar Plain vessels are from other featured and midden areas. Two of these were shouldered vessels, one, like the first vessel described in this paragraph, with a loop handle and slightly everted rim, the other with a nearly straight neck, flattened lip, and four small nodes on the upper portion of the neck. Three bowls, two complete enough to indicate rounded bases, are also included in this type. One is a small complete vessel almost 10 cm. in diameter with a notched lip. Another, complete except for the base, curves slightly inward at the lip, while a third is similar to this, without the incurved lip, though not as well made. A final vessel is unusual in that it has four lobes at the shoulder (fig. 41) and a thickened strip on the neck midway between the narrowest point of the neck and the lip. The rim is outflaring and the base flat. The closest thing to this that I have seen was reported by McMichael and Kellar (1960, pl. 4) from 1 LE 7, where it was assigned to the Rood's Focus. All of the plain vessels are tempered with coarse sand. They are assigned to the Lamar Plain type first described by Caldwell in the Rembert Mounds

report (1953, p. 316). In the Oliver Basin report McMichael and Kellar describe a large sample of plain Late Lamar pottery, noting at 1 LE 1 (Soap Creek) a prevalence of nodes, a high correlation between plain surfaces and notched lips, usually on bowls, and the occurrence of a few strap handles (McMichael and Kellar 1960, p. 63). A definite relation to this area can be seen at Avery Mound. To the south, Lamar Plain can be related to Lake Jackson Plain (Willey and Woodbury 1942, p. 245-246; Willey 1949, p. 458-460; Wimberly 1960, p. 188-189), and similarities can even be seen in the more southerly Pinellas Plain (Willey 1949, p. 482).

Eight Lamar Complicated Stamped vessels are represented, with five different stamping designs. They were tempered with coarse sand to coarse sand of medium grit size. Vessel forms included subconoidal vessels with marked shoulders, constricted necks, and a flaring rim; and bowls with both plain and pinched lips. Vessels with flared rims had notched strips on the neck, the strips appearing to be thin appliques, or folded rims with the top part of the fold smoothed off. The surface treatments included smoothed-over bulls-eye stamping (fig. 42), two examples of a crescent stamp (figs. 43-44), one from a featured area (skull and pottery) and the other from an unfeatured area; two worn criss-cross stamps which may be a portion of a figure eight (figs. 45-46), from a pre-mound level, which may indicate that they may more properly be classified as Kolomoki (not enough present to be certain); a bulls-eye motif with a cross-bar in the middle (fig. 47); and finally a filfot cross (fig. 48).

The filfot cross sherds are also from a pre-mound level, and hence may predate the main occupation. Although this does occur in Central Georgia Lamar, it is more common on the east coast, and is common in Irene. It is rare this far west in Georgia. In general, the complicated stamped vessels fit descriptions given by various earlier workers (Jennings and Fairbanks 1939, p. 2; Willey 1949, p. 485-486; Caldwell 1953, p. 316), and can easily be related to Lamar Complicated Stamped pottery in surrounding areas. However, the addition of the crescent stamp should be noted. With the exceptions of the two pre-mound contexts, all of these vessels were found in featured and midden areas, indicating that they belong to the main occupation.

Finally I shall turn to the Lamar Bold Incised vessels, all but one of which are casuela bowls. Six of the eight vessels were found in or around the burned building, and may indicate a ceremonial nature for the structure. Five of the vessels have curvilinear scroll motifs, two geometric incisions, and one, a gourd-shaped vessel, parallel undulating lines (fig. 49). It is worth noting that the row of reed punctates often found at the bottom of the incised area on Lamar Bold Incised vessels found to the south (Willey 1949, p. 493) and in many instances (Wauchope 1966, pp. 82-86) to the north, are not found on any of these vessels. The exterior surfaces of six of the vessels are burnished; the other two vessels had smoothed exteriors. (For descriptions of the type, see Kelly 1938, p. 46-51; Jennings and Fairbanks

1939, p. 4; Caldwell 1953, p. 316; Wauchope 1966; and Willey 1949). This type does not occur in abundance in Florida, where Fort Walton Incised, a related type, holds its temporal position.

In summary, the Avery Mound is a relatively Late Lamar site, with a rather typical Lamar pottery complex, and indications of an earlier, pre-Lamar ("Mississippian") occupation.

Appendix 3 Simplified Artifact Catalog

Catalog #	Date	Location
15003	June 8, 1966	Surface in neighborhood of mound
15007	June 14, 1966	Surface, Potts mound
15055	July 4, 1966	Potts Plantation; Avery mound
15056	July 1, 1966	Northeast corner of field; surface
15057	July 1, 1966	Surface, mound area
15113	July 21, 1966	X-1, 0.0-0.5 feet below surface
15114	July 22, 1966	X-1, north, 0.0-0.5 feet below surface
15115	July 22, 1966	X-1, 37 feet west of center; 13.5 north of center
15116	July 22, 1966	X-1, center
15117	July 22, 1966	X-1, 50-60 East, 0.0-0.5 feet below surface
15118	July 22, 1966	X-1, 40-50 East, 0.0-0.5 feet below surface
15119	July 22, 1966	X-1, 60-70 East, 0.0-0.5 feet below surface
15120	July 22, 1966	70-80 East, X-1, 0.0-0.5 feet below surface
15121	July 22, 1966	60-70 East, X-1, 0.5-1.0 feet below surface
15122	July 22, 1966	50-60 East, X-1, 0.5-1.0 feet below surface
15123	July 22, 1966	X-1; 40-50 East; 0.5-1.0 feet below surface
15125	July 25, 1966	Exploratory trench spoil pile
15127	July 25, 1966	70-80 west, 0.5-1.0 feet below surface
15128	July 25, 1966	55-65 west, 1.0-1.5 feet below surface
15129	July 25, 1966	Exploratory trench, 40-45 west, 1-1.5 below surface
15130	July 25, 1966	45-55 west, 1.0-1.5 feet below surface
15131	July 25, 1966	45-55 west, 1.5-2.0 feet below surface
15132	July 25, 1966	45-55 East, 2.0-2.5 feet below surface
15133	July 25, 1966	45-55 west, 2.5-3.0 feet below surface
15134	July 25, 1966	45-55 west, 3.0 feet below surface
15135	July 25, 1966	Southeast field; surface
15167	July 25, 1966	Avery mound, East trench
15168	August 28, 1966	Basal clay Layer, north face trench mound 1
15169	August 28, 1966	Posthole, north trench wall at 47 west
15170	August 28, 1966	Surface, Mound 2, 97 yards due South of Mound 1, center stake
15171	August 28, 1966	Surface around Mound 1
15181	July 17, 1966	Woodland area Southeast of mound
15306	July 25, 1966	56.7 west 0.6 South; exploratory trench
15394	June 19, 1967	Potts Plantation mound, surface collection
15395	June 19, 1967	Avery mound, surface collection
15396	June 19, 1967	Avery mound and a little beyond surface collection

Catalog #	Date	Location
15397	June 19, 1967	Surface collection; 0-200 north; 455-490 East
15398	June 19, 1967	440 South; 490 East
15399	June 19, 1967	0.5-1.0 feet below surface; 390 South; 490 East
15400	June 19, 1967	Removing plow zone; 390 South; 490 East
15401	June 19, 1967	Removing plow zone; 390 South; 490 East
15402	June 19, 1967	Removing plow zone; 290 South; 490 East
15403	June 19, 1967	Removing plow zone; 290 South; 490 East
15404	June 19, 1967	Removing plow zone; 290 South; 490 East
15405	June 19, 1967	Removing plow zone; 190 South; 490 East
15406	June 20, 1967	0.0-0.5 feet below surface: removing plow zone; 440 South; 490 East
15407	June 20, 1967	Removing plow zone; 0.0-0.5 feet below surface; 440 South; 490 East
15408	June 20, 1967	Removing plow zone; 0.0-0.5 feet below surface; 440 South; 490 East
15409	June 20, 1967	Removing plow zone; 0.0-0.5 feet below surface; 440 South; 490 East
15410	June 20, 1967	Removing plow zone; 390 South; 490 East
15411	June 20, 1967	0.5-1.0 feet below surface; 190 South; 490 East
15412	June 20, 1967	0.5-1.0 feet below surface; 290 South; 490 East
15413	June 20, 1967	0.5-1.0 feet below surface; 290 South; 490 East
15414	June 20, 1967	0.5-1.0 feet below surface; 290 South; 490 East
15415	June 20, 1967	0.5-1.0 feet below surface; 290 South; 490 East
15416	June 20, 1967	0.5-1.0 feet below surface; 290 South; 490 East
15417	June 20, 1967	0.5-1.0 feet below surface; 390 South; 490 East
15418	June 21, 1967	Removing plow zone; 0.0-0.5 feet below surface; 240 South; 490 East
15419	June 21, 1967	Removing plow zone; 0.0-0.5 feet below surface; 290 South; 500 East
15423	June 21, 1967	0.5-1.0 feet below surface: 290 South; 500 East
15424	June 21, 1967	0.5-1.0 feet below surface: 290 South; 500 East
15425	June 21, 1967	0.5-1.0 feet below surface: 190 South; 490 East
15426	June 21, 1967	Clearing plow zone; 0.5-1.0 feet below surface; 340 South; 490 East
15427	June 21, 1967	0.5-1.0 feet below surface: 440 South; 490 East
15428	June 22, 1967	290 South; 500 East; 0.5-1.0 feet below surface; clearing house midden
15429	June 22, 1967	290 South; 500 East; 0.5-1.0 feet below surface; clearing house midden
15430	June 22, 1967	350 South; 490 East; 0.0-0.5 feet below surface
15431	June 22, 1967	240 South; 490 East; clearing plow zone
15432	June 22, 1967	440 South; 490 East; 0.5-1.0 feet below surface
15433	June 23, 1967	290 South; 500 East; 0.0-0.5 feet; power screen
15434	June 23, 1967	290 South; 500 East; 0.5-1.0 feet; power screen
15435	June 23, 1967	340 South; 490 East; 0.5-1.0 feet; power screen
15436	June 23, 1967	340 South; 490 East; 0.5-1.0 feet; power screen
15437	June 23, 1967	340 South; 490 East; 0.5-1.0 feet; power screen

Catalog #	Date	Location
15438	June 23, 1967	340 South; 490 East; 0.5-1.0 feet; power screen
15439	June 23, 1967	340 South; 490 East; 0.5-1.0 feet; power screen
15440	June 26, 1967	350-360 South; 490-500 East; 0.0-0.5 feet below surface
15442	June 26, 1967	440-450 South; 490-500 East; working & charcoal Layers in 0.5-1.0 feet below surface
15443	June 26, 1967	290-300 South; 500-510 East; 0.5-1.0 feet below surface
15444	June 26, 1967	350-360 South; 490-500 East; 0.5-1.0 feet below surface
15445	June 26, 1967	Avery mound, surface
15446	June 26, 1967	Avery mound, surface
15447	June 27, 1967	350-360 South; 490-500 East; 0.0-0.5 feet; power screen
15448	June 27, 1967	470-480 South; 460-470 East; 0.0-0.5 feet
15449	June 27, 1967	290-300 South; 500-510 East; 0.5-1.0 feet
15450	June 27, 1967	350-360 South; 490-500 East; 0.5-1.0 feet
15451	June 27, 1967	441-450 South; 490-500 East; 0.5-1.0 feet
15452	June 27, 1967	350-360 South; 490-500 East; 0.5-1.0 feet; power screen
15453	June 28, 1967	290-300 South; 490-500 East; 0.5-1.0 feet; troweling base of second cut
15454	June 28, 1967	290 South; 500 East; 0.5-1.0 feet; troweling base of second cut
15479	June 30, 1967	Surface
15490	July 11, 1967	490 South; 530 East; 0.5-1.0 feet
15491	July 11, 1967	490 South; 530 East; 0.0-0.5 feet
15492	July 11, 1967	490 South; 530 East, 0.5-1.0 feet
15493	July 11, 1967	490 South; 530 East, 0.5-1.0 feet
15494	July 11, 1967	460 South; 490 East; 0.0-0.5 feet
15495	July 11, 1967	290 South; 485 East; 0.5-1.0 feet
15496	July 11, 1967	490 South; 530 East; 0.5-1.0 feet
15497	July 11, 1967	490 South; 530 East; 0.5-1.0 feet
15498	July 11, 1967	440 South; 490 East; 0.5-1.0 feet
15499	July 11, 1967	440 South; 490 East; 0.5-1.0 feet
15500	July 11, 1967	460 South; 490 East; 0.0-0.5 feet
15501	July 12, 1967	550 South; 490 East
15502	July 12, 1967	490 South; 540 East; 0.0-0.5 feet
15503	July 12, 1967	490 South; 540 East; 0.0-0.5 feet
15504	July 12, 1967	530 South; 490 East; 0.0-0.5 feet
15505	July 12, 1967	540 South; 490 East; removing plow zone & troweling at base of plow zone
15506	July 12, 1967	440 South; 490 East; 0.5-1.0 feet
15507	July 12, 1967	490 South; 530 East; 0.5-1.0 feet
15508	July 13, 1967	Surface collection in the area of Avery mound
15509	July 13, 1967	540 South; 480 East; removing plow zone
15510	July 13, 1967	530 South; 480 East; removing plow zone

Catalog #	Date	Location
15511	July 13, 1967	540 South; 500 East
15512	July 13, 1967	540 South; 490 East; removing plow zone (backdirt from square)
15513	July 13, 1967	530 South; 500 East; plow zone
15514	July 13, 1967	530 South; 500 East; removing plow zone
15515	July 13, 1967	550 South; 480 East; removing plow zone
15516	July 13, 1967	290 South; 500 East, Feature 14
15562	July 5, 1967	340 South; 490 East; troweling base second cut (0.5-1.0 feet)
15563	July 5, 1967	350 South; 490 East; troweling bases second cut (0.5-1.0 feet)
15564	July 5, 1967	290 South; 485 East; 0.0-0.5 feet
15565	July 5, 1967	290 South; 475 East; 0.5-1.0 feet
15566	July 5, 1967	290 South; 500 East; shovel shaving & troweling at base of 0.5-1.0 feet
15567	July 5, 1967	295 South; 510 East; 0.0-0.5 feet
15568	July 14, 1967	490 South; 520 East; 0.0-0.5 feet
15569	July 14, 1967	510 South; 460 East; removing plow zone
15570	July 14, 1967	490 South; 520 East; plow zone
15571	July 14, 1967	560 South; 490 East; removing plow zone
15572	July 14, 1967	570 South; 490 East; removing plow zone
15573	July 17, 1967	490 South; 520 East; removing midden overlying mound phase
15574	July 17, 1967	490 South; 530 East; troweling at base of second cut (0.5-1.0 feet); removing midden over mound (?) phase
15597	July 18, 1967	470 South; 500 East; removing plow zone
15598	July 18, 1967	480 South; 510 East; removing plow zone
15599	July 18, 1967	480 South; 510 East; removing plow zone
15600	July 18, 1967	490 South; 520 East; removing dark midden overlying lighter midden (0.5-1.0 feet)
15601	July 18, 1967	490 South; 520 East; 0.5-1.0 feet; removing dark midden Layer overlying light midden
15602	July 18, 1967	470 South; 480 East; removing plow zone
15603	July 19, 1967	470 South; 490 East; removing plow zone
15604	July 19, 1967	470 South; 500 East; troweling mound phase at base of plow zone
15605	July 19, 1967	470 South; 510 East; removing plow zone
15606	July 19, 1967	480 South; 500 East; removing plow zone
15607	July 19, 1967	490 South; 520 East; removing dark midden overlying lighter midden
15608	July 20, 1967	490 South- 460 East; troweling red sand level at base of plow zone
15609	July 20, 1967	520 South; 440 East; plow zone
15610	July 20, 1967	520 South; 450 East; plow zone
15611	July 20, 1967	520 South; 460 East; plow zone
15669	July 18, 1967	580 South; 510 East; plow zone
15670	July 24, 1967	240 South; 490 East; Feature 5
15671	July 24, 1967	340 South; 490 East; Feature 10
15672	July 24, 1967	490 South; 520 East; removing light midden Layer underlying dark, heavy midden

Catalog #	Date	Location
		(second midden level from surface)
15673	July 25, 1967	490 South; 510 East; removing ash-filled midden liner (removing second midden liner)
15674	July 25, 1967	490 South; 510 East; 0.0-0.5 feet; power screen
15675	July 25, 1967	490 South; 510 East; removing midden Layer overlying at the level approximately 0.5-1.0 feet
15676	July 25, 1967	340 South; 490 East; Feature 10
15677	July 25, 1967	490 South; 520 East; removing light midden under dark midden; removing second midden Layer
15678	July 26, 1967	490 South; 520 East; removing light midden under dark midden (second midden)
15679	July 26, 1967	490 South; 520 East; removing light midden under dark midden (removing second midden Layer)
15680	July 26, 1967	290 South; 490 East; removing Feature 11; Feature 5.
15681	July 26, 1967	490 South; 510 East; removing midden East section of lay face
15682	July 27, 1967	470 South; 510 East; plow zone
15683	July 27, 1967	490 South; 530 East; removing plow zone; 0.5-1
15684	July 27, 1967	530 South; 500 East; excavating fill feature 19
15685	July 27, 1967	490 South; 520 East; plow zone
15686	July 27, 1967	490 South; 520 East; removing plow zone
15687	July 27, 1967	490 South; 520 East; pottery kiln on grey ash level; Feature 17
15688	July 27, 1967	530 South; 500 East; Feature 19; excavating fill
15726	July 31, 1967	490 South; 540 East; removing dark midden (first level); partially restorable vessel
15727	July 31, 1967	490 South; 520 East; water-laid sand under light midden (midden 2)
15728	July 31, 1967	240 South; 490 East; Feature 6
15729	July 31, 1967	490 South; 540 East; removing darker midden over lighter midden
15730	July 31, 1967	496 South; 520 East; grey ash level underlying water-laid sand
15731	July 31, 1967	490 South; 520 East; Feature 17
15732	July 31, 1967	490 South; 540 East; removing darker midden over lighter midden
15733	August 1, 1967	460 South; 490 East; plow zone; power screened
15734	August 1, 1967	490 South; 540 East; removing darker midden from lighter midden
15735	August 1, 1967	460 South; 490 East; plow zone
15736	August 1, 1967	490 South; 520 East; removing ash midden below water-laid sand (midden 3)
15737	August 1, 1967	460 South; 490 East; plow zone
15784	August 2, 1967	Feature 24; 490 South; 540 East
15785	August 2, 1967	490 South; 530 East; removing dark, heavy midden below plow zone
15786	August 2, 1967	470 South; 490 East; 0.5 below surface; charcoal from clay of mound ramp
15787	August 2, 1967	490 South; 530 East; removing dark midden under plow zone
15788	August 2, 1967	490 South; 540 East; troweling at base of dark midden under plow zone
15805	August 3, 1967	765 South; 495 East; removing plow zone
15806	August 3, 1967	795 South; 485 East; removing plow zone
15807	August 3, 1967	795 South; 490 East; removing plow zone

Catalog #	Date	Location
15808	August 3, 1967	760 South; 495 East; removing plow zone
15809	August 3, 1967	790 South; 495 East; removing plow zone
15810	August 3, 1967	295 South; 510 East; Postmold 2
15811	August 3, 1967	795 South; 495 East; removing plow zone
15812	August 3, 1967	785 South; 495 East; removing plow zone
15813	August 3, 1967	295 South; 510 East; Post 8
15814	August 3, 1967	770 South; 495 East; removing plow zone
15815	August 3, 1967	780 South; 495 East; removing plow zone
15816	August 3, 1967	715 South; 495 East; removing plow zone
15817	August 3, 1967	295 South; 510 East; Postmold 6
15818	August 4, 1967	295 South; 510 East; Postmold 1
15828	August 7, 1967	490 South; 530 East; removing water-laid sand level under light midden
15829	August 7, 1967	490 South; 530 East; removing water-laid sand level under light midden
15830	August 7, 1967	490 South; 530 East; removing grey ash level; sub-mound village level
15846	August 9, 1967	Feature 28; 490 South; 530 East
15847	August 9, 1967	470 South; 480 East; plow zone; power screened
15848	August 9, 1967	530 South; 480 East; plow zone; power screened
15849	August 9, 1967	530 South; 490 East; plow zone; power screened
15850	August 9, 1967	550 South; 490 East; plow zone; power screened
15851	August 9, 1967	Feature 27; 490 South; 540 East
15852	August 9, 1967	Feature 18; Feature 11; 590 South; 520 East
15853	August 9, 1967	540 South; 490 East; plow zone; power screened
15854	August 9, 1967	Feature 28; 490 South; 530 East
15855	August 9, 1967	490 South; 530 East; water-laid sand under light midden; power screen
15856	August 9, 1967	490 South; 540 East; 0.0-0.5 feet feet below surface; plow zone; power screened
15857	August 9, 1967	470 South; 490 East; plow zone; power screened
15858	August 10, 1967	530 South; 500 East; plow zone; power screened
15859	August 9, 1967	490 South; 530 East; Feature 19
15860	August 9, 1967	Feature 18; 490 South; 520 East
15861	August 9, 1967	Surface; Potts mound, adjacent to 530 South; 500 East; East side
15871	August 8, 1967	470 South; 500 East; plow zone
15872	August 8, 1967	490 South; 520 East; Feature 18 fill
15873	August 8, 1967	480 South; 500 East; plow zone
15874	August 8, 1967	Feature 99; core
15875	August 10, 1967	490 South; 520 East; removing grey ash level (sub-mound village)
15876	August 10, 1967	490 South; 530 East; Feature 32; fire Pit
15877	August 10, 1967	Feature 21; 490 South; 530 East
15878	August 10, 1967	Feature 32; 490 South; 530 East; fire Pit

Catalog #	Date	Location
15879	August 10, 1967	490 South; 520 East; removing ash level (sub-mound village)
15880	August 10, 1967	490 South; 520 East; grey ash level (sub-mound village)
15881	August 11, 1967	550 South; 500 East; plow zone; power screened
15882	August 11, 1967	540 South; 500 East; plow zone; power screened
15883	August 11, 1967	490 South; 530 East; removing grey midden (sub-mound village)
15885	August 14, 1967	570 South; 490 East; plow zone; power screened
15886	August 14, 1967	470 South, 490 East; 470 South, 480 East
15887	August 14, 1967	560 South; 490 East; plow zone; power screened
15888	August 14, 1967	550 South; 480 East; plow zone; power screened
15889	August 14, 1967	East trench, mixed dirt; power screened
15890	August 15, 1967	Burial; Feature 6-30
15891	August 15, 1967	East trench, mixed dirt, power screened
15892	August 15, 1967	490 South; 510 East; plow zone; power screened
15893	August 15, 1967	520 South; 440 East; plow zone; power screened
15894	August 15, 1967	From the ramp, location not stated, presumably 470 South-490 East; 470 South-480 East
15922	August 18, 1967	Burial; Feature 6-30
15923	August 18, 1967	Burial; Feature 14
15924	August 17, 1967	Burial; Feature 18-32
15925	August 8, 1967	470 South; 500 East; plow zone
15930	August 14, 1967	540 South; 480 East; plow zone
15931	August 14, 1967	East trench, mixed dirt, power screened
15932	August 14, 1967	East trench, mixed dirt, power screened
15933	August 15, 1967	East trench; Potts mound; mixed dirt; power screened
15936	August 16, 1967	520 South; 450 East; plow zone; screened
15937	August 16, 1967	Mixed dirt from East trench; power screened
15938	August 16, 1967	520 South; 445 East; 0.5-1.0 feet below surface
15939	August 16, 1967	284 South; 477.5 East; 0.0-1.0 feet
15940	August 16, 1967	520 South; 440 East (5x5); 0.5-1.0 feet below surface
15941	August 16, 1967	520 South; 460 East; plow zone
15942	August 16, 1967	520 South; 455 East; 0.5-1.0 feet below surface
15943	August 16, 1967	520 South; 440 East; plow zone
15944	August 16, 1967	Mixed dirt from East trench
15945	August 16, 1967	470 South; 470 East; plow zone
15946	August 16, 1967	460 South; 490 East; plow zone
15947	August 16, 1967	Mixed dirt, East trench
15948	August 16, 1967	470 South; 470 East; plow zone
15949	August 16, 1967	5x5 (location? presumably at or near 520 South, 440 East; 0.5-1.0 feet below surface)
15950	August 16, 1967	Feature 6-30; burial

Catalog #	Date	Location
15951	August 16, 1967	Mixed dirt from East trench
15952	August 16, 1967	Mixed dirt from East trench
15953	August 17, 1967	Feature 18-32; burial
15954	August 17, 1967	440 South; 490 East; 0.5-1.0 feet
15955	August 17, 1967	440 South; 490 East; 0.5-1.0 feet
15956	August 17, 1967	Feature 18-32; burial
15957	August 17, 1967	490 South; 510 East; plow zone
15958	August 17, 1967	440 South; 490 East; 0.5-1.0 feet below surface
15959	August 16, 1967	470 South; 480 East; plow zone
15960	August 21, 1967	390 South; 490 East; 0.5-1.0 feet below surface
15961	August 21, 1967	340 South; 490 East; 1.0 below surface
15962	August 21, 1967	Feature H 33; possibly fill
15963	August 23, 1967	290 South; 490 East; Feature 8 fill
15964	August 23, 1967	290 South; 490 East; Feature 8 posthole fill
15965	August 23, 1967	From ramp, presumably at 470 South, 490 East; 470 South, 480 East
15968	August 24, 1967	287.5 South; 467.5 East (5x10); 0.0-1.0; tracing palisade
15969	August 24, 1967	285 South; 257.5 East (probably wrong: should be 457.5 East [5x10] 0.0-0.5 feet below surface tracing palisade)
15970	August 24, 1967	284 South; 477.5 East
15971	August 24, 1967	470 South; 490 East; troweling ramp
15972	August 24, 1967	287.5 South; 477.5 East; 0-1.0 feet below surface
15973	August 24, 1967	285 South; 428.5 East; 0.0-1.0 feet
15977	August 24, 1967	Pit intruded into Feature 6-30
15978	August 8, 1967	Feature 18; fill; 490 South; 520 East
15979	August 10, 1967	Feature 32; fire Pit; 490 South; 530 East
15981	August 24, 1967	Feature 39; carbon sample
15982	August 24, 1967	Feature 39; fill
15983	August 24, 1967	Feature 40
15984	August 24, 1967	Feature 38
15985	August 25, 1967	Feature 34
16018	August 31, 1967	Feature 41; 490 South; 500 East
16019	August 31, 1967	Feature 42, 290 South; 500 East
16029	September 1, 1967	290 South; 490 East; Feature 9, from west wall of posthole
16104	September 9, 1967	
16150	September 13, 1967	Mound: burial; Feature 37-44
16863	July 18, 1968	450-460 South; 510-520 East
16864	July 18, 1968	460-470 South; 490-500 East
16865	July 19, 1968	Post Hole 50-46

Catalog #	Date	Location
16866	July 19, 1968	Post Hole 50-77
16867	July 19, 1968	Post Hole 50-148
16868	July 19, 1968	Post Hole 50-1
16869	July 19, 1968	Post Hole 50-9
16870	July 19, 1968	Post Hole 50-71
16871	July 19, 1968	Post Hole 50-99
16872	July 19, 1968	Post Hole 50-5
16873	July 19, 1968	Post Hole 50-3
16874	July 19, 1968	Post Hole 50-8
16875	July 19, 1968	Post Hole 50-49
16876	July 19, 1968	Post Hole 50-13
16877	July 19, 1968	Post Hole 50-6
16878	July 19, 1968	Post Hole 50-80
16879	July 19, 1968	Post Hole 50-2
16880	July 19, 1968	Post Hole 50-98
16881	July 19, 1968	Feature 53; 540.5 South; 499 East
16882	July 19, 1968	Feature 54; 533 South; 495 East
16883	July 19, 1968	Feature 55
16884	July 19, 1968	Post Hole 50-47
16885	July 22, 1968	Feature 63
16886	July 22, 1968	360-365 South; 490 East
16887	July 22, 1968	Feature 60
16888	July 22, 1968	750-755 South; 495-500 East
16889	July 22, 1968	Feature 60
16890	July 22, 1968	755-760 South; 495-500 East
16891	July 22, 1968	Post Hole 50-63
16892	July 22, 1968	Post Hole 50-20
16893	July 22, 1968	Post Hole 50-106
16894	July 22, 1968	Post Hole 50-182
16895	July 22, 1968	Post Hole 50-167
16896	July 22, 1968	Post Hole 50-58
16897	July 22, 1968	Post Hole 50-102
16898	July 22, 1968	Post Hole 50-103
16899	July 22, 1968	Post Hole 50-100
16900	July 22, 1968	Trash Pit
16901	July 22, 1968	Post Hole 50-178
16902	July 22, 1968	Post Hole 50-72
16903	July 22, 1968	Post Hole 50-69

Catalog #	Date	Location
16904	July 22, 1968	Post Hole 50-62
16905	July 22, 1968	Feature 65
16906	July 22, 1968	Post Hole 50-109
16907	July 22, 1968	Post Hole 50-70
16908	July 22, 1968	Post Hole 50-53
16909	July 22, 1968	Post Hole 50-10
16910	July 22, 1968	Post Hole 50-116
16911	July 22, 1968	Post Hole 50-193
16912	July 22, 1968	Post Hole 50-107
16913	July 22, 1968	Post Hole 50-127
16914	July 22, 1968	No entry
16915	July 22, 1968	Post Hole 50-179
16916	July 22, 1968	Post Hole 50-147
16917	July 22, 1968	Post Hole 50-65
16918	July 22, 1968	Post Hole 50-14
16919	July 22, 1968	Post Hole 50-10
16920	July 22, 1968	Post Hole 50-79
16921	July 23, 1968	Post Hole 50-155
16922	July 23, 1968	0.0-0.75
16923	July 23, 1968	440-450 South; 500-490 East
16924	July 23, 1968	Feature 60
16925	July 23, 1968	Feature 60
16926	July 23, 1968	Feature 64
16927	July 23, 1968	Feature 60
16928	July 23, 1968	Post Hole 50-122A
16929	July 23, 1968	Post Hole 50-122B
16930	July 23, 1968	Post Hole 50-162
16931	July 23, 1968	Post Hole 50-113
16932	July 23, 1968	Post Hole 50-52
16933	July 23, 1968	Post Hole 50-75
16934	July 23, 1968	Feature 64
16935	July 23, 1968	Post Hole 50-133
16936	July 23, 1968	Post Hole 50-134
16937	July 23, 1968	Post Hole 50-123
16938	July 23, 1968	Post Hole 50-149
16939	July 23, 1968	Post Hole 50-177
16940	July 23, 1968	Post Hole 50-89
16941	July 23, 1968	Post Hole 50-146

Catalog #	Date	Location
16942	July 23, 1968	Post Hole 50-120
16943	July 23, 1968	Post Hole 50-91
16944	July 23, 1968	Post Hole 50-125
16945	July 24, 1968	495-500 South; 550-560 East
16946	July 24, 1968	495-500 South; 570-580 East
16947	July 24, 1968	Post Hole 50-55
16948	July 24, 1968	495-500 South; 580-590 East
16949	July 24, 1968	495-500 South; 590-600 East
16950	July 24, 1968	495-500 South; 560-570 East
16951	July 24, 1968	495-500 South; 600-610 East
16952	July 24, 1968	Post Hole 33-5
16953	July 24, 1968	Post Hole 50-33
16954	July 24, 1968	Post Hole 50-166
16955	July 24, 1968	Feature 70; 340-350 South; 490-500 East
16956	July 24, 1968	Feature 60
16957	July 24, 1968	495-500 South; 560-570 East
16958	July 24, 1968	Feature 56
16959	July 24, 1968	495-500 South; 550-560 East
16960	July 24, 1968	495-500 South; 620-630 East
16961	July 24, 1968	495-500 South; 580-590 East
16962	July 24, 1968	495-500 South; 580-590 East
16963	July 24, 1968	495-500 South; 560-570 East
16964	July 24, 1968	Post Hole 33-8
16965	July 24, 1968	495-500 South; 630-640 East
16966	July 24, 1968	495-500 South; 610-620 East
16967	July 24, 1968	495-500 South; 640-650 East
16968	July 24, 1968	Post Hole 50-15
16969	July 24, 1968	495-500 South; 620-630 East
16970	July 24, 1968	495-500 South; 580-590 East
16971	July 24, 1968	495-500 South; 600-610 East
16972	July 24, 1968	495-500 South; 640-650 East
16973	July 24, 1968	Post Hole 33-16
16974	July 24, 1968	Post Hole 50-54
16975	July 24, 1968	Feature 58
16976	July 24, 1968	Post Hole 50-144
16977	July 24, 1968	Post Hole 50-64
16978	July 24, 1968	Post Hole 50-118
16979	July 24, 1968	Post Hole 50-7

Catalog #	Date	Location
16980	July 24, 1968	Feature 62, bone (?)
16981	July 24, 1968	Post Hole 33-12
16982	July 24, 1968	Post Hole 50-50
16983	July 24, 1968	Post Hole 50-126 (Query: Should initials be GJWfor G Wintowski?)
16984	July 24, 1968	Post Hole 50-93
16985	July 24, 1968	Post Hole 50-139
16986	July 24, 1968	Post Hole 50-165
16987	July 24, 1968	Post Hole 33-21
16988	July 24, 1968	440-450 South; 470-480 East
16989	July 25, 1968	Feature 73
16990	July 25, 1968	Feature 73
16991	July 25, 1968	Feature 56
16992	July 25, 1968	Post Hole 50-140
16993	July 25, 1968	Post Hole 69-45
16994	July 25, 1968	870-875 South; 525-530 East
16995	July 25, 1968	Feature 69
16996	July 25, 1968	Post Hole 69-55
16997	July 25, 1968	870-875 South; 525-530 East
16998	July 25, 1968	870-875 South; 525-530 East
16999	July 25, 1968	Post Hole 69-60
17000	July 25, 1968	Post Hole 69-50
17001	July 26, 1968	510-520 East; 800-810 South
17002	July 26, 1968	Feature 73
17003	July 26, 1968	Post Hole 69-24
17004	July 26, 1968	Post Hole 69-52
17005	July 26, 1968	Post Hole 50-90
17006	July 26, 1968	Post Hole 69-43
17007	July 26, 1968	Post Hole 69-40
17008	July 26, 1968	Post Hole 69-56
17009	July 26, 1968	Post Hole 69-8
17010	July 26, 1968	Post Hole 69-28
17011	July 26, 1968	Post Hole 69-43B
17012	July 26, 1968	Post Hole 69-11
17013	July 26, 1968	Post Hole 69-34
17014	July 26, 1968	Post Hole 69-17
17015	July 26, 1968	Post Hole 69-10
17016	July 26, 1968	Post Hole 69-19
17017	July 26, 1968	Feature 51

Catalog #	Date	Location
17019	July 24, 1968	800-790 South; 500 East
17020	July 24, 1968	Feature 60; broken sherd from inside vessel
17021	July 24, 1968	Feature 60
17022	August 1, 1968	Feature 74
17023	July 24, 1968	Feature 51
17024	July 16, 1968	Feature 134
17025	June 16, 1968	Surface
17026	July 11, 1968	Feature 167
17027	July 25, 1968	430-440 South; 480 East
17028	July 25, 1968	Feature 69
17029	July 25, 1968	Feature 56
17030	July 25, 1968	Feature 58
17031	July 25, 1968	Post Hole 50-18
17032	July 25, 1968	Post Hole 50-32
17033	July 25, 1968	Post Hole 50-59A
17034	July 25, 1968	Post Hole 50-59B
17035	July 25, 1968	Post Hole 50-84C
17036	July 25, 1968	Post Hole 50-124
17037	July 25, 1968	Post Hole 50-124B
17038	July 25, 1968	Post Hole 50-133B (Query: Should initials be GJW for Gloria Wintowski?)
17039	July 25, 1968	Post Hole 50-153B
17040	July 25, 1968	Post Hole 50-159
17041	July 25, 1968	Post Hole 50-159B
17042	July 25, 1968	Post Hole 50-171
17043	July 25, 1968	Post Hole 50-172C
17044	July 25, 1968	Post Hole 50-172
17045	July 25, 1968	Post Hole 50-173p (b?)
17046	July 25, 1968	Post Hole 50-181
17047	July 29, 1968	Post Hole 69-1
17048	July 29, 1968	Post Hole 73-36
17049	July 29, 1968	Post Hole 73-40
17050	July 29, 1968	Post Hole 73-45
17051	July 30, 1968	Post Hole 73-2
17052	July 30, 1968	Post Hole 73-6
17053	July 30, 1968	Post Hole 73-7
17054	July 30, 1968	Post Hole 73-8
17055	July 30, 1968	Post Hole 73-10
17056	July 30, 1968	Post Hole 73-16

Catalog #	Date	Location
17057	July 30, 1968	Post Hole 73-17
17058	July 30, 1968	Post Hole 73-26
17059	July 30, 1968	Post Hole 73-27
17060	July 30, 1968	Post Hole 73-32
17061	July 30, 1968	Post Hole 73-42
17062	July 30, 1968	Post Hole 69-22
17063	July 30, 1968	Post Hole 69-34
17064	July 30, 1968	Post Hole 69-69
17065	July 30, 1968	Post Hole 69-70
17066	July 30, 1968	Post Hole 69-73
17067	July 30, 1968	Post Hole 69-76
17068	July 30, 1968	Post Hole 69-96
17069	July 30, 1968	Post Hole 69-100
17070	July 30, 1968	Post Hole 69-103
17071	July 30, 1968	Post Hole 69-106
17072	July 30, 1968	Post Hole 69-111
17073	July 30, 1968	Post Hole 69-126
17074	July 30, 1968	Post Hole 69-116
17075	July 30, 1968	Post Hole 69-139
17076	July 30, 1968	Post Hole 69-140
17077	July 30, 1968	430-440 South; 490-500 East
17078	July 30, 1968	Feature 68; shovel shaving
17079	July 30, 1968	490-500 South; 510-520 East
17080	July 30, 1968	Pedestal; 750 South; 500 East
17081	July 30, 1968	Post Hole 73-29
17082	July 30, 1968	Post Hole 73-39
17083	July 30, 1968	490-500 South; 510-520 East
17084	July 30, 1968	440-450 South; 480-490 East
17085	July 30, 1968	Feature 67; oval Pit with pottery & bone
17086	July 30, 1968	760-770 South; 500-510 East
17087	July 30, 1968	Feature 68
17088	July 30, 1968	Surface
17089	July 30, 1968	Provenience lost
17090	July 30, 1968	Feature 74
17091	July 30, 1968	750-760 South; 495-510 East
17092	July 30, 1968	440-450 South; 470-480 East
17093	July 29, 1968	490-500 South; 530-540 East
17094	July 29, 1968	360-364 South; 490-493.4 East

Catalog #	Date	Location
17095	July 31, 1968	Feature 77
17096	July 31, 1968	760-770 South; 500-510 East
17097	July 31, 1968	780 South; 500-510 East
17098	July 31, 1968	Feature 74
17099	July 31, 1968	760 South; 495 East
17100	July 31, 1968	Feature 79
17101	July 31, 1968	440-450 South; 490-500 East
17102	July 31, 1968	Feature 66
17103	July 31, 1968	430-440 South; 480-490 East
17104	July 31, 1968	760-770 South; 500 East
17105	July 31, 1968	Feature 68; large pot sherds
17106	July 31, 1968	Feature 68; small pottery sherds
17107	July 31, 1968	430-440 South; 490-500 East
17108	July 31, 1968	430-440 South; 480-490 East
17109	July 31, 1968	Feature 67
17110	July 31, 1968	Feature 78
17111	July 31, 1968	Feature 76
17112	July 31, 1968	770-780 South; 500-510 East
17113	July 31, 1968	900-910 South; 500-510 East
17114	August 1, 1968	Feature 83
17115	August 1, 1968	Feature 83
17116	August 1, 1968	Feature 83; 461.5 South; 490.3 East; burial
17117	August 1, 1968	4.5-5.0 below surface
17118	August 1, 1968	910-920 South; 500-510 East
17119	August 1, 1968	910-920 South; 500-510 East
17120	August 1, 1968	4.0-4.5 below surface, approximately
17121	August 1, 1968	510-520 East; 800-810 South
17122	August 1, 1968	Post Hole 50-158
17123	August 1, 1968	Post Hole 50-154
17124	August 1, 1968	Post Hole 50-160
17125	August 1, 1968	Post Hole 50-167
17126	August 1, 1968	Post Hole 50-174
17127	August 1, 1968	Post Hole 50-179
17128	August 1, 1968	Post Hole 50-181
17129	August 1, 1968	Post Hole 81-1
17130	August 1, 1968	Post Hole 81-3
17131	August 1, 1968	Post Hole 81-6
17132	August 1, 1968	Post Hole 81-11

Catalog #	Date	Location
17133	August 1, 1968	Post Hole 81-12
17134	August 1, 1968	Post Hole 81-13
17135	August 1, 1968	Post Hole 81-16
17136	August 1, 1968	Post Hole 81-18
17138	August 1, 1968	910-920 South; 500-510 East; 0.5-1.0 below surface
17139	August 5, 1968	Feature 77
17140	August 5, 1968	Feature 77
17141	August 5, 1968	Feature 77
17142	August 5, 1968	480-490 South; 500-510 East
17143	August 5, 1968	Pottery, provenience lost; large sections of pot possibly restorable
17144	August 5, 1968	490-500 South; 440-445 East
17145	August 5, 1968	Feature 77
17146	August 5, 1968	Feature 81
17147	August 5, 1968	Feature 86
17148	August 5, 1968	Feature 84
17149	August 5, 1968	Post Hole 84-2
17150	August 5, 1968	Post Hole 84-13
17151	August 5, 1968	Post Hole 84-15
17152	August 5, 1968	Post Hole 84-21
17153	August 5, 1968	Post Hole 50-183
17154	August 5, 1968	Post Hole 50-192
17155	August 5, 1968	Post Hole 50-193
17156	August 5, 1968	Post Hole 50-206
17157	August 5, 1968	Post Hole 50-233
17158	August 5, 1968	Post Hole 50-243
17159	August 5, 1968	Post Hole 50-258
17160	August 5, 1968	Post Hole 50-262
17161	August 5, 1968	Post Hole 50-277
17162	August 5, 1968	Post Hole 50-282
17163	August 5, 1968	Post Hole 50-285
17164	August 5, 1968	Post Hole 50-306
17165	August 5, 1968	Post Hole 50-307
17166	August 6, 1968	900-910 South; 500-510 East
17167	August 6, 1968	910-920 South; 500-510 East
17168	August 6, 1968	Post Hole 50-235
17169	August 6, 1968	460-470 South; 500-510 East
17170	August 6, 1968	495-498 South; 440-445 East
17171	August 6, 1968	Organics found around burnt logs

Catalog #	Date	Location
17172	August 6, 1968	440-450 South; 500 East
17173	August 6, 1968	Feature 77
17174	August 6, 1968	485-495 South; 640-643 East
17175	August 6, 1968	490-500 South; 500-510 East
17176	August 6, 1968	440-450 South; 500-510 East
17177	August 6, 1968	Feature 72; organics found around logs
17178	August 6, 1968	Feature 72; organics found around logs
17179	August 6, 1968	Feature 89; pieces around pottery vessel
17180	August 6, 1968	430-440 South; 500-510 East
17181	August 7, 1968	910-920 South; 500-510 East; 0.5-1.0 below surface
17182	August 7, 1968	440-450 South; 480-490 East; Feature 72
17183	August 7, 1968	430-440 South; 490-500 East; Feature 72
17184	August 7, 1968	440-450 South; 480-490 East; Feature 72
17185	August 7, 1968	430-440 South; 480-490 East; Feature 72
17186	August 7, 1968	430-440 South; 480-490 East
17187	August 7, 1968	Provenience lost from Feature 72
17188	August 7, 1968	Feature 86
17189	August 7, 1968	Post Hole 87-13
17190	August 7, 1968	480-490 East; 460-470 South
17191	August 7, 1968	900-905 South; 505-510 East
17192	August 7, 1968	460-470 South; 490-500 East
17192	August 6, 1968	430-440 South; 470-480 East
17193	August 8, 1968	Feature 57
17194	August 8, 1968	Feature 71
17195	August 8, 1968	Feature 88
17196	August 8, 1968	Feature 91
17197	August 8, 1968	Feature 72
17198	August 8, 1968	Deep Test Pit
17199	August 8, 1968	430-440 South; 500 East
17200	August 9, 1968	450-460 South; 500-510 East; Feature 72
17201	August 9, 1968	Feature 93
17202	August 9, 1968	Surface
17203	August 6, 1968	Feature 89
17204	August 12, 1968	510-520 East; 490-500 South
17205	August 13, 1968	Feature 94; burial?
17206	August 13, 1968	Feature 96; burial?
17207	August 13, 1968	Feature 97
17208	August 13, 1968	Feature 80; restorable pot

Catalog #	Date	Location
17209	August 14, 1968	Post Hole 96-13
17210	August 14, 1968	Post Hole 96-14
17211	August 14, 1968	Post Hole 96-16
17212	August 14, 1968	Post Hole 96-18
17213	August 14, 1968	Post Hole 96-19
17214	August 14, 1968	Post Hole 96-20
17215	August 14, 1968	Post Hole 96-21
17216	August 14, 1968	Post Hole 96-22
17217	August 14, 1968	Post Hole 96-25
17218	August 15, 1968	Post Hole 90-51
17218	August 15, 1968	Feature 72; burned log level
17219	August 15, 1968	Post Hole 90-54
17220	August 15, 1968	Post Hole 96-8
17221	August 15, 1968	Post Hole 96-53
17222	August 15, 1968	Post Hole 90-65
17223	August 15, 1968	Post Hole 90-66
17224	August 15, 1968	Post Hole 90-67
17225	August 15, 1968	Post Hole 90-76
17226	August 15, 1968	Surface
17227	August 15, 1968	293-297 South; 465-475 East
17228	August 15, 1968	Post Hole 96-6
17229	August 15, 1968	300-310 South; 450-460 East
17230	August 15, 1968	435.0 South; 475.0 East; pottery from house floor under wattle
17231	August 15, 1968	Feature 97
17232	August 15, 1968	Feature 98; pot in position under wattle; 430.5 South; 471.0 East; 1.0 below surface
17233	August 16, 1968	625-630 East; 485-495 South
17234	August 16, 1968	Surface
17235	August 16, 1968	530-560 South; 470-500 East
17236	August 16, 1968	870-880 South; 540-550 East
17237	August 16, 1968	Post Hole 94-22
17238	August 16, 1968	Post Hole 94-24
17239	August 16, 1968	Post Hole 94-26
17240	August 16, 1968	Post Hole 94-27
17241	August 16, 1968	Post Hole 94-29
17242	August 16, 1968	Post Hole 94-33
17243	August 16, 1968	Post Hole 94-40
17244	August 16, 1968	Post Hole 94-43
17245	August 16, 1968	Post Hole 94-44

Catalog #	Date	Location
17246	August 16, 1968	Post Hole 94-63
17247	August 16, 1968	Post Hole 94-68
17248	August 16, 1968	Post Hole 94-70
17249	August 16, 1968	Post Hole 94-73
17250	August 16, 1968	Post Hole 94-81
17251	August 19, 1968	870-880 South; 540-550 East; 0.5-1.0 below surface
17252	August 19, 1968	870-880 South; 540-550 East
17253	August 19, 1968	870-880 South; 530-540 East
17254	August 19, 1968	Feature 94; found by NG; taken out by VW & JP
17255	August 19, 1968	Feature 96
17263	August 16, 1968	Post Hole 94-65
17264	August 19, 1968	490-500 South; 450-460 East
17265	August 21, 1968	Post Hole 90-22
17266	August 21, 1968	Post Hole 90-44
17267	August 21, 1968	Post Hole 90-73
17268	August 21, 1968	Post Hole 94-1
17269	August 21, 1968	Post Hole 94-5
17270	August 21, 1968	Post Hole 94-6
17271	August 21, 1968	Post Hole 94-47
17272	August 21, 1968	Post Hole 94-49
17273	August 21, 1968	Post Hole 98-4
17274	August 21, 1968	Post Hole 98-12
17275	August 21, 1968	Post Hole 98-17
17276	August 21, 1968	Feature 99; found in excavating Pit
17277	August 21, 1968	Feature 72; burned house
17278	August 21, 1968	Area 103; 870-880 South; 530-540 East; 0.0 feet -0.5 feet below surface
17279	August 21, 1968	Feature 97; burial
17280	August 21, 1968	Feature 103; house area; 520-530 East; 860-870 South
17281	August 21, 1968	Feature 103; 870-880 South; 520-530 East; 0.5 feet -1.0 feet below surface
17282	August 21, 1968	Area 103; 870-880 South; 520-530 East; 0.0 feet -0.5 feet below surface
17283	August 21, 1968	Area 103; 860-870 South; 520-530 East; 0.0-0.5 below surface
17284	August 21, 1968	Area 103; 870-880 South; 520-530 East; 0.5-1.0 below surface
17285	August 21, 1968	Feature 97; burial
17286	August 21, 1968	Feature 85
17287	August 21, 1968	Post Hole 72-11
17288	August 21, 1968	Feature 98; 300-310 South; 450-460 East
17289	August 21, 1968	Feature 97; skull & pottery
17290	August 23, 1968	Area beneath datum9.00

Catalog #	Date	Location
17291	August 23, 1968	Found digging around A-72
17292	August 23, 1968	Feature 100; 520-530 East; 870-880 South
17293	August 23, 1968	Feature 103; provenience lost
17294	August 23, 1968	Feature 99; burial
17295	August 23, 1968	Post Hole 98-23
17296	August 23, 1968	Post Hole 103-29
17297	August 23, 1968	Post Hole 98-5
17298	August 23, 1968	Post Hole 98-6
17299	August 23, 1968	Post Hole 98-9
17300	August 23, 1968	Post Hole 98-11
17301	August 23, 1968	Post Hole 98-14
17302	August 23, 1968	Post Hole 98-15
17303	August 23, 1968	Post Hole 98-16
17304	August 23, 1968	Post Hole 98-17
17305	August 23, 1968	Post Hole 98-18
17306	August 23, 1968	Post Hole 98-23
17307	August 23, 1968	Post Hole 98-27
17308	August 23, 1968	Post Hole 98-28
17309	August 23, 1968	Post Hole 98-29
17310	August 23, 1968	Post Hole 98-30
17311	August 23, 1968	Post Hole 98-32
17312	August 23, 1968	Post Hole 98-34
17313	August 23, 1968	Post Hole 98-35
17314	August 23, 1968	Post Hole 98-36
17315	August 23, 1968	Post Hole 98-7
17316	August 23, 1968	860-870 South; 540-550 East; area 103; 0.0 feet -0.5 feet below surface
17317	August 23, 1968	860-870 South; 520-530 East; Feature area 103; 0.5 feet -1.0 feet below surface
17318	August 23, 1968	860-870 South; 530-540 East; Feature area 103; 0.0 feet -0.5 feet below surface
17319	August 23, 1968	860-870 South; 520-530 East; Feature area 103; 0.5 feet -1.0 feet below surface
17320	August 23, 1968	Post Hole 103-21
17321	August 23, 1968	Post Hole 103-23
17322	August 23, 1968	Post Hole 103-25
17323	August 23, 1968	Post Hole 103-28
17324	August 23, 1968	Post Hole 103-29
17325	August 23, 1968	Post Hole 103-30
17326	August 23, 1968	Post Hole 103-31
17327	August 23, 1968	Post Hole 103-32
17328	August 23, 1968	Post Hole 103-33

Catalog #	Date	Location
17329	August 23, 1968	Post Hole 103-35
17330	August 23, 1968	Post Hole 103-38
17331	August 23, 1968	Post Hole 103-39
17332	August 23, 1968	Post Hole 103-49
17333	August 23, 1968	Post Hole 103-50
17334	August 23, 1968	Post Hole 103-51
17335	August 23, 1968	Post Hole 103-52
17336	August 23, 1968	Post Hole 103-54
17337	August 23, 1968	Post Hole 103-56
17338	August 23, 1968	Post Hole 103-59
17339	August 23, 1968	Post Hole 103-64
17340	August 23, 1968	Post Hole 103-65
17341	August 23, 1968	Post Hole 103-66
17342	August 23, 1968	Post Hole 103-67
17343	August 23, 1968	Post Hole 103-68
17344	August 23, 1968	Post Hole 103-74
17345	August 24, 1968	Post Hole 103-5
17346	August 24, 1968	Post Hole 103-8
17347	August 24, 1968	Post Hole 103-12
17348	August 24, 1968	Post Hole 103-13
17349	August 23, 1968	860-870 South; 530-540 East; area 103
17350	August 26, 1968	Feature area 103; 860-870 South; 530-540 East; 0.5 feet -1.0 feet below surface
17351	August 26, 1968	860-870 South; 530-540 East; Feature area 103
17352	August 26, 1968	Feature 99; burial
17353	August 26, 1968	Feature 104; 870-880 South; 530-540 East
17354	August 26, 1968	Burnt rotunda area
17355	August 26, 1968	A-72; 440-450 South; 470-480 East
17356	August 26, 1968	Provenience lost (upper landing roadAvery's not 9TP64?)
17357	August 26, 1968	430-440 South; 460-470 East
17358	August 26, 1968	430-440 South; 470-480 East
17359	August 26, 1968	440-450 South; 500-510 East
17360	August 26, 1968	Found around Post Hole 72-11
17361	August 26, 1968	A-72; 425-430 South; 480-500 East; trowel scraped
17362	August 26, 1968	A-72; 430-440 South; 500-510 East; trowel scrape
17363	August 26, 1968	A-72; 450-460 South; 500-510 East
17364	August 26, 1968	A-72; 450-460 South; 500-510 East; trowel scrape
17365	August 26, 1968	Provenience lost; found in dirt pile A-72
17366	August 26, 1968	450-460 South; 470-480 East; trowel scrape

Catalog #	Date	Location
17367	August 26, 1968	Post Hole 98-2
17368	August 26, 1968	Post Hole 98-19
17369	August 26, 1968	Post Hole 98-18
17370	August 26, 1968	Post Hole 72-1
17371	August 26, 1968	Post Hole 72-2
17372	August 26, 1968	Post Hole 72-3
17373	August 26, 1968	Post Hole 72-4
17374	August 26, 1968	Feature 100; 870-880 South; 520-530 East
17375	August 26, 1968	Post Hole 72-5
17376	August 26, 1968	Post Hole 72-6
17377	August 26, 1968	Post Hole 72-7
17378	August 26, 1968	Post Hole 72-10
17379	August 26, 1968	Post Hole 72-11
17380	August 26, 1968	Post Hole 72-14
17381	August 26, 1968	Post Hole 72-15
17382	August 26, 1968	Post Hole 72-16
17383	August 26, 1968	Post Hole 72-17
17384	August 26, 1968	Post Hole 72-18
17385	August 26, 1968	Post Hole 72-19
17386	August 26, 1968	Post Hole 72-20
17387	August 26, 1968	Post Hole 72-21
17388	August 26, 1968	Post Hole 72-22
17389	August 26, 1968	Post Hole 72-23
17390	August 26, 1968	Post Hole 72-24
17391	August 26, 1968	Post Hole 72-26
17392	August 27, 1968	Post Hole 90-50
17393	August 27, 1968	Post Hole 90-69
17394	August 27, 1968	Post Hole 90-74
17395	August 27, 1968	Post Hole 103-83
17396	August 27, 1968	Post Hole 103-84
17397	August 27, 1968	Post Hole 103-85
17398	August 27, 1968	Post Hole 103-98
17399	August 27, 1968	Post Hole 103-101
17400	August 27, 1968	Post Hole 103-102
17401	August 27, 1968	Post Hole 103-105
17402	August 27, 1968	Feature A. 103; 860-870 South; 540-550 East; 0.5 feet -1.0 feet below surface
17403	August 27, 1968	860-870 South; 540-550 East; 0.5 feet -1.0 feet below surface
17404	August 27, 1968	860-870 South; 540-550 East; 0.5 feet -1.0 feet below surface

Catalog #	Date	Location
17405	August 27, 1968	Feature 100; 570-580 South; 520-530 East
17406	August 27, 1968	Feature 104; 870-880 South; 530-540 East
17407	August 27, 1968	Feature 105; 860-870 South; 530-540 East
17408	August 27, 1968	Feature 106
17410	August 27, 1968	Post Hole 90-35
17411	August 27, 1968	490-500 South; 520-530 East
17412	August 27, 1968	870-880 South; 820-830 East (Should this be 520-530 East?)
17414	August 27, 1968	490-500 South; 530-540 East; troweling
17415	August 27, 1968	Feature 101 (turned out to be posthole)
17416	August 26, 1968	Post Hole 103-1
17417	August 26, 1968	Post Hole 103-3
17418	August 26, 1968	Post Hole 103-6
17419	August 26, 1968	Post Hole 103-9
17420	August 26, 1968	Post Hole 103-15
17421	August 26, 1968	Post Hole 103-16
17422	August 26, 1968	Post Hole 103-19
17423	August 26, 1968	Post Hole 103-20
17424	August 26, 1968	Post Hole 103-22
17425	August 26, 1968	Post Hole 103-42
17426	August 26, 1968	Post Hole 103-58
17427	August 26, 1968	Post Hole 103-60
17428	August 26, 1968	Post Hole 103-48
17429	August 26, 1968	Post Hole 103-53
17430	August 26, 1968	Post Hole 103-55
17431	August 26, 1968	Post Hole 103-62
17432	August 26, 1968	Post Hole 103-67
17433	August 26, 1968	Post Hole 103-73
17434	August 26, 1968	Post Hole 103-75
17435	August 26, 1968	Post Hole 103-76
17436	August 26, 1968	Post Hole 103-77
17437	August 26, 1968	Post Hole 103-78
17438	August 26, 1968	Post Hole 103-79
17439	August 26, 1968	Post Hole 103-80
17440	August 26, 1968	Post Hole 103-86
17441	August 26, 1968	Post Hole 103-87
17442	August 26, 1968	Post Hole 103-91
17443	August 26, 1968	Post Hole 103-95
17444	August 26, 1968	Post Hole 103-96

Catalog #	Date	Location
17445	August 26, 1968	Post Hole 103-99
17446	August 28, 1968	540-550 South; 497-505 East
17447	August 28, 1968	Surface
17448	August 28, 1968	540-550 South; 497-505 East (clay-sand Layer; light-colored charcoal specks; approx. 1 foot -2 feet below surface)
17449	August 29, 1968	Post Hole 103-109
17450	August 29, 1968	Feature 101; 560-570 South; 530-540 East
17451	August 29, 1968	Feature 104; burial
17452	August 29, 1968	Feature 105
17453	August 29, 1968	Feature 106
17454	August 29, 1968	Feature 99
17455	August 29, 1968	Feature 100
17456	August 30, 1968	Feature 104-B
17457	August 30, 1968	540-550 South; 497-505 East
17458	August 30, 1968	Feature 108
17459	August 30, 1968	540-550 South; 497-505 East
17460	August 30, 1968	550-560 South; 480-490 East
17461	August 30, 1968	Feature 104-B
17462	August 30, 1968	Feature 104-B
17463	August 30, 1968	Feature 104-B
17464	August 30, 1968	Feature 104-B
17465	August 31, 1968	Feature 108
17466	August 31, 1968	550-560 South; 480-490 East
17467	August 31, 1968	550-560 South; 480-490 East
17468	August 31, 1968	Feature 104; dark midden
17469	September 2, 1968	550-560 South; 480-490 East
17470	September 2, 1968	550-560 South; 480-490 East
17471		560-570 South; 491.5-496.5 East; level C outwash
17472	September 2, 1968	Feature 99
17473	August 28, 1968	Feature 71
17474	September 3, 1968	Feature 72
17475	September 3, 1968	Feature 104
17476	August 30, 1968	Burial
17500	July 26, 1968	Ca. 850 South; 2.0-2.5 feet below surface
17501	July 26, 1968	Ca. 850 South; 2.5-3.0 feet below surface
17502	July 26, 1968	Ca. 850 South; 3.0-3.5 feet below surface
17503	July 26, 1968	Ca. 850 South3.5-4.0 feet below surface

Catalog #	Date	Location
17504	August 3, 1968	A-72; below burned log of rotundanorth side of mound
17505	August 3, 1968	A-72; 482.5-484 East; 436-437 South
17506	August 3, 1968	A-72; 486.3-487.3 East; 437.9-438.7 South
17507	August 4, 1968	A-72; 484.9-486.3 East; 486.5-487.4 South
17508	August 4, 1968	A-72; 487-488 East; 436.2-438 South
17509	August 4, 1968	A-72; 489-490 East; 437-438.6 South
17510	August 5, 1968	A-72; 493.8-494.4 East; 452-453.3 South
17511	August 6, 1968	A-72; 493.5-493.8 East; 453-455.5 South
17512	August 6, 1968	A-72; 483.8-485 East; 442.3 South
17513	August 6, 1968	A-72; 480-490 East; 440-450 South
17514	August 6, 1968	A-72; 480-490 East; 440-450 South
17515	August 6, 1968	A-72; 480-490 East; 440-450 South
17516	August 6, 1968	A-72; 480-490 East; 430-440 South
17517	August 9, 1968	FeatureX; 451.5 South; 485.5 East
17518	August 26, 1968	Post Hole 72-27
17519	August 31, 1968	485.5 East; 558.5 South; strat. Testelev. 8.86 upper contact of pre-mound
17520	September 3, 1968	Feature 104
17521	September 4, 1968	491.5-496.5 East; 570-580 South
17522	September 4, 1968	491.5-496.5 East; 560-570 South
17522	September 3, 1968	550-560 South; 480-490 East; 1.5-2.0 below surface ; black loam Layer
17523	September 4, 1968	491.5 -496.5 East; 560-570 South; Test Pit Layer C
17524	September 4, 1968	Test trench Layer D
17525	September 4, 1968	491.5-496.5 East; 560-570 South; Test Pit Layer E
17526	September 5, 1968	491.5-496.5 East; 560-570 South; Test Pit Layer E
17527	September 5, 1968	491.5-496.5 East; 560-570 South; Test Pit Layer F (red)
17528	September 5, 1968	491.5-496.5 East; 560-580 South; Test Pit Layer G
17529	September 5, 1968	491.5-496.5 East-560-580 South; Test Pit Layer N
17530	September 6, 1968	443 South; 497 East
17531	September 9, 1968	Area around Feature 89
17532	September 10, 1968	491.5-496.5 East; 570-580 South
17533	September 11, 1968	491.5-496.5 East; 570-580 South
17534	September 11, 1968	480-490 East; 440-450 South; burned house

Catalog #	Date	Location
	1968	
17535	September 13, 1968	480-490 East; 430-440 South; burned house
17536	September 13, 1968	490-500 East; 430-440 South; burned house
17537	September 13, 1968	480-490 East; 450-460 South; burned house
17538	September 14, 1968	490-500 East; 440-450 South; burned house
17539	September 16, 1968	490-500 East; 460-470 South; burned house
17540	September 16, 1968	490-500 East; 450-460 South; burned house
17541	August 29, 1968	Post Hole 90-212
17542	August 29, 1968	454 South; 486.5 East; house floor
17543	August 31, 1968	550-560 South; 480-490 East; G-layer; transitional secondary
17548	July 7, 1969	Surface
17549		Surface (burned house?)
17550	June 17, 1969	440-450 South; 470-480 East
17551	June 17, 1969	440-450 South; 480-490 East
17552	June 17, 1969	440-450 South; 490-500 East
17553	June 17, 1969	450-460 South; 470-480 East
17554	June 17, 1969	Surface clearing
17555	June 17, 1969	430-440 South; 470-480 East
17556	June 17, 1969	430-440 South; 490-500 East
17557	June 17, 1969	440-450 South; 480-490 East
17558	June 17, 1969	440-450 South; 490-500 East
17559	June 17, 1969	450-460 South; 470-480 East
17560	June 17, 1969	440-450 South; 490-500 East
17561	June 17, 1969	450-460 South; 480-490 East
17562	June 17, 1969	450-460 South; 480-490 East; Feature 110
17563	June 17, 1969	450-460 South; 490-500 East
17564	June 23, 1969	440-450 South; 480-490 East; Feature 113
17565	June 23, 1969	440-450 South; 490-500 East; surface clearing
17566	June 23, 1969	450-460 South; 480-490 East; Feature 112 and postholes
17567	June 23, 1969	450-460 South; 480-490 East; Feature 113 and postholes
17568	June 23, 1969	450-460 South; 480-490 East; surface clearings
17569	June 23, 1969	470-480 South; 480-490 East; surface clearings
17570	June 23, 1969	90-100 South; 100-110 East
17571	June 24, 1969	430-440 South; 470-480 East
17572	June 24, 1969	440-450 South; 480-490 East
17573	June 24, 1969	450-460 South; 470-480 East; postholes

Catalog #	Date	Location
17574	June 24, 1969	450-460 South; 480-490 East; postholes
17575	June 24, 1969	450-460 South; 490-500 East; Feature 115 and postholes
17576	June 24, 1969	80-90 South; 110-100 East
17577	June 24, 1969	100-110 South; 100-110 East
17578	June 24, 1969	Surface
17579	June 25, 1969	430-440 South; 470-480 East; Feature 117
17580	June 25, 1969	440-450 South; 470-480 East
17581	June 25, 1969	450-460 South; 470-480 East; Feature 112
17582	June 25, 1969	450-460 South; 480-490 East
17583	June 25, 1969	450-460 South; 480-490 East; Feature 119
17584	June 25, 1969	450-460 South; 490-500 East; postholes
17608	July 1, 1969	450-460 South; 470-480 East
17609	July 1, 1969	450-460 South; 480-490 East
17610	July 2, 1969	440-450 South; 470-480 East
17611	July 2, 1969	440-450 South; 480-490 East
17612	July 2, 1969	450-460 South; 480-490 East
17613	July 2, 1969	450-460 South; 490-500 East
17623	July 8, 1969	B 440-450 South; 490-500 East
17630	July 9, 1969	440-450 South; 470-480 East
17631	July 9, 1969	440-450 South; 480-490 East
17632	July 9, 1969	450-460 South; 470-480 East
17636	July 10, 1969	430-440 South; 470-480 East
17637	July 10, 1969	430-440 South; 480-490 East
17638	July 10, 1969	430-440 South; 490-500 East
17639	July 10, 1969	432 South; 500 East
17646	July 15, 1969	430-440 South; 480-490 East
17647	July 15, 1969	440-450 South; 480-490 East
17648	July 15, 1969	440-450 South; 490-500 East
17649	July 15, 1969	450-460 South; 490-500 East
18137		Post Holes 1-14
18138		
18139		Post Holes 15-23
18140		Post Holes 24-30
18141		
18142		Post Holes 30-40
18143		Post Holes 45-53
18144		Post Hole 61
18145		

Catalog #	Date	Location
18146		
18147		
18148		Post Hole 57
18149		
18150		Post Holes 58-70
18151		
18152		
18153		
18154		
18155		
18156		Post Holes 61-66; 70-74
18157		Post Holes 57, 58, 59
18158		
18159		
18160		
18161		
18162		Post Hole 64
18163		
18164		
18165		
18166		
18167		
18168		
18169		
18170		
18171		
18172		
18173		Post Holes 57-73; Feature 129
18174		Post Holes 85 & 87
18175		Post Holes 120-123
18176		
18177		
18178		
18179		
18180		
18181		
18182		Post Holes 70-91
18183		

Catalog #	Date	Location
18184		
18185		
18186		
18187		Post Holes 97-100
18188		Post Holes 101-104
18189		Feature 137
18190		Post Holes 106-108
18191		Post Holes 114-116
18192		
18193		
18194		
18195		Post Holes 60, 78, 79, 82, 83 & 108
18196		
18197		Feature 130
18198		Lot missing
18199		Feature 132
18200		
18201		Feature 129
18202		
18203		Post Hole 93
18204		Post Holes 117 & 118
18205		Feature 129
18206		Feature 133
18207		
18208		Feature 132
18209		Feature 134
18210		Feature 135
18211		
18212		Feature 133
18213		Post Hole 86
18214		
18215		
18216		
18217		
18218		
18219		Feature 134
18220		Post Hole 82
18221		Post Holes 120, 122, 126, 131, & 132

Catalog #	Date	Location
18222		Post Holes 125-131
18223		
18224		Feature 132
18225		
18226		
18227		
18228		
18229		Feature 136
18230		
18231		
18232		
18233		Post Hole 13
18234		
18235		Feature 130
18236		
18237		Post Holes 135-141
18238		Post Holes 142-144, 147-149
18239		Feature 139
18240		
18241		
18242		
18243		
18244		
18245		
18246		
18247		
18248		
18249		
18250		
18251		
18252		
18253		Missing
18254		
18255		Post Holes 142, 144, 145, 147, 151, 153-158, 163, 164, 166-168
18256		Feature 136; burial
18257		Feature 138; burial
18258		
18259		

Catalog #	Date	Location
18260		
18261		Feature 142
18262		
18263		
18264		Feature 144
18265		Feature 145
18266		Feature 151
18267		Feature 152
18268		
18269		
18270		
18271		
18272		Post Holes 174, 176-178
18273		Post Holes 106, 172, 173, 180-187, 189-194, 196-200, 203, 205, 207
18274		
18275		
18276		
18277		
18278		Missing
18279		
18280		Feature 149
18281		
18282		
18283		
18284		
18285		
18286		
18287		
18288		Feature 129; burial
18289		Feature 129
18290		Feature 147; burial
18291		
18292		
18293		
18294		Burial; Feature 154
18295		
18296		
18297		Feature 143

Catalog #	Date	Location
18298		Feature 147
18299		Feature 149
18300		Feature 149
18301		
18302		
18303		Feature 149
18304		Feature 143, 151
18305		
18306		Feature 156
18307		Feature 156
18308		Feature 157, 155
18309		Feature 155
18310		Feature 149
18311		Feature 142
18312		Post Hole 193
18313		Post Hole 200
18314		Post Holes 203, 209, 213
18315		
18316		Feature 151
18317		Post Holes 180, 199, 198, 173
18318		Post Holes 207, 208, 214, 203, 212
18319		
18320		
18321		Post Holes 152, 160, 159, 149, 143, 162, 148, 146, 161, 141
18322		Missing
18323		Feature 136
18324		Post Holes 165, 169, 150
18325		
18326		
18327		
18328		
18329		
18330		Feature 162
18331		
18332		
18333		
18334		
18335		Feature 156

Catalog #	Date	Location
18336		Feature 157
18337		Feature 159
18338		Feature 167
18339		Feature 158
18340		Feature 147
18341		Void
18342		Feature 162; burial
18343		Feature 167
18344		Feature 141
18345		
18346		
18347		Feature 162
18348		Feature 158; burial
18349		Feature 147; burial
18350		Feature 152; burial?
18367		Burial
18368		
18369		
18370		
18371		
18372		
18373		
18374		
18375		
18376		
18377		
18378		
18379		
18380		
18381		
18382		Feature 170
18383		
18384		
18385		
18386		Post Holes 230-232, 234-236, 245
18387		
18388		Feature 173
18389		

Catalog #	Date	Location
18390		
18391		
18392		Feature 168; burial
18393		
18394		
18395		Feature 128
18396		Feature 174
18397		Feature 175